



**Corotop**<sup>®</sup>  
MORE THAN RESISTANCE

**ROOF  
SYSTEMS**

Corotop® is a brand of modern roofing systems providing the durability of the roof for many years. In our offer you will find a wide scope of high quality roofing- and facade underlays, vapour barriers and roof accessories.

Production of the Corotop® membranes is technologically advanced process performed according to the highest European standards. In our factory is made the entire production process, from pure raw material to the final product. As a result, we guarantee you products of quality proven - from the purchase of raw materials until the completion of the product that goes on the roofs. Each batch of the material goes to a laboratory for detailed examination of the key parameters. Only so thoroughly tested product goes on the market. The values of examined parameters are of great importance, because the membranes mounted on the roof are exposed to extreme effects of external factors. Decades of experience and specialization in the production of Corotop® roofing membranes is the best guarantee of its quality and durability of our products. The confirmation of reliability of the Corotop® brand is the trust of our customers, and most of all - roofers, who use our products for years to thousands of European roofs. Corotop® products are available in all European countries and achieved recognition among professionals and thousands of satisfied customers, as evidenced by the continuous increase in sales and development of our brand.

Corotop® brand is not only roofing membranes, it is also a comprehensive system of roof accessories, which provides full ventilation and stability of the roof. We offer modern solutions, based on products of the highest quality. In the scope of Corotop® products we offer selection of specialized tapes for membrane bonding and repair, sealing tapes, and product for ridge installation and ventilation, products for sealing chimneys, roof baskets and eaves. Complementary elements of our offer is roof communication and snow protection. All products are offered in a wide scope of colours and many variants of dimensions, tailored to customer needs.

Corotop® is a comprehensive offer of the roof system. Our products are innovative and high quality, trusted by many customers and contractors throughout Europe. Sales at Corotop® is supported by an active marketing and technical advice, based on know-how developed through years of experience in manufacturing, sales and marketing.

Corotop® is a brand of the highest quality - trust experts, trust the brand Corotop®.

# TABLE OF CONTENTS

---

<b>About Corotop</b>	2
----------------------	---

---

<b>Products</b>	
-----------------	--

---

1. Systems of roof membranes	
1.1 Corotop® LIGHT 100	7
1.2 Corotop® SMART 115	8
1.3 Corotop® CLASSIC 130	9
1.4 Corotop® BLUE 140	10
1.5 Corotop® STRONG 160	11
1.6 Corotop® EXTRA PROTECT 165	12
1.7 Corotop® RED STRONG 180	13
1.8 Corotop® X-TREAM 190	14
1.9 Corotop® ULTRA 220	15
1.10 Corotop® FORCE PROTECT 235	16
1.11 Corotop® POWER 250	17
1.12 Corotop® MONO 330	18
1.13 Corotop® BITUM 450	19
1.14 Corotop® METAL 440	20
1.15 Corotop® OPLOT 250	21
1.16 Corotop® OPLOT 300	22

---

2. Systems of facade membranes	
2.1 CoroVIN 100	25
2.2 Corotop® OPEN 160	26

---

3. Vapour barrier systems	
3.1 Corotop® ACTIVE CONTROL	29
3.2 Corotop® METALLIC	30
3.3 Corotop® REFLEX	31
3.4 Corotop® VARIANT	32

---

4. Systems of specialised tapes	
4.1 Corotop® MIX	35
4.2 Corotop® FIX	36
4.3 Corotop® BAND	37
4.4 Corotop® BUTYL	38
4.5 Corotop® PUR	39
4.6 Corotop® FLEX	40

---

---

5. Systems of ridge products	
5.1 CoroVENT®	43
5.2 CoroVENT® E	44
5.3 CoroVENT® M	45
5.4 CoroVENT® S	46
5.5 CoroNIT®	47
5.6 CoroBLACH®	48

---

6. Systems of chimney products	
6.1 CoroMIN® ALU	51
6.2 Corotop® ALUFLEX	52
6.3 CoroBLEI® B	53
6.4 CoroMIN® PB	54
6.5 CoroBIT®	55
6.6 CoroLINE®	56

---

7. Systems of roof basket	
7.1 CoroPRESS®	59
7.2 CoroKOSZ® P	60
7.3 CoroKOSZ® W	61
7.4 CoroKLIN®	62
7.5 CoroKLIN® PLUS	63
7.6 CoroKOSZ® K	64

---

8. Eave systems	
8.1 CoroKAP®	67
8.2 CoroKAP® V	68
8.3 CoroKAP® EV	69
8.4 CoroCRAT®	70
8.5 CoroRAN®	71
8.6 CoroBIRD®	72

---

9. Assembly systems	
9.1 CoroKAL®	75
9.2 CoroSPIN®	76

---

10. Systems of roof communication	
10.1 CoroLAV®	79
10.2 CoroLAV® L	80
10.3 CoroLAV® W	81-82
10.4 CoroLAV® K	83
10.5 CoroLAV® M	84
10.6 CoroSTEP®	85
10.7 Corotop® SET	86

---

11. Snow protection systems	
11.1 CoroSNOW®	89
11.2 CoroSNOW® W	90-91

---



**„QUALITY IS A WAY  
OF THINKING THAT  
RESULTS  
IN APPLYING  
AND CONSTANT  
LOOKING FOR  
THE BEST SOLUTIONS.“**

**- Edward Deming -**

# SYSTEMS OF ROOF MEMBRANES



# Corotop® LIGHT 100

A vapour permeable, three-layer roof membrane consisting of functional film secured from both sides with polypropylene vielses. The functional film provides resistance to water penetration and regulates vapour permeability balance in a roof system. Applied only on partly-boarded roofs.

## Application:

- the membrane dedicated on roofs with partial-boarding
- initial underlay for thermally insulated, ventilated sloping roofs
- to be used to most types of roof coverage, particularly under concrete tiles
- as the wind- barrier in a siding methfrom

## Advantages:

- minimizes heat loss
- regulates two-way vapour permeability
- protects thermal-insulation againts damping
- three-layer product higly resistant to ageing processes



GRAMMATURE  
100 g/m<sup>2</sup>



REACTION TO FIRE  
CLASS E



VAPOUR  
PERMEABILITY (SD)  
0,02 m



RESISTANCE  
TO WATER PENETRATION  
CLASS W1



RESISTANCE TO UV  
3 MONTHS



RESISTANCE TO TEARING  
(NAIL SHANK) ALONG/ACROSS:  
120 N / 150 N

Name	Size	Colour	Package
Corotop® LIGHT 100	1,5m x 50r.m. = 75m <sup>2</sup>	grey-white	35 rolls

# Corotop® SMART 115

In comparison to other low-grammature membranes the product is characterised by long-lasting durability. It also does not require ventilation space between the membrane and thermoinsulation. Vlieses protect functional film against influence of outside factors and provide better mechanical resistance. The membrane is UV resistant and can be applied only on partly-boarded roofs.

### Application:

- the membrane dedicated on roofs with part-boarding
- initial underlay for thermally insulated, ventilated sloping roofs
- to be used to most types of roof coverage, particularly under concrete and metal tiles

### Advantages:

- minimizes heat loss
- regulates two-way vapour permeability
- protects thermal-insulation against dampening
- extremely durable three-layer product



GRAMMATURE  
115 g/m<sup>2</sup>



REACTION TO FIRE  
CLASS E



VAPOUR  
PERMEABILITY (SD)  
0,02 m



RESISTANCE  
TO WATER PENETRATION  
CLASS W1



RESISTANCE TO UV  
3 MONTHS



RESISTANCE TO TEARING  
(NAIL SHANK) ALONG/ACROSS:  
140 N / 160 N

Name	Size	Colour	Package
Corotop® SMART 115	1,5m x 50r.m. = 75m <sup>2</sup>	black-white	33 rolls



# Corotop® CLASSIC 130

The membrane's high resistance to mechanical damages provides safe work at a height regardless of weather conditions. It can be applied on fully-boarded roofs. High quality of the product delivers unchanging parameters within time as well as durability of roof coverage.

## Application:

- the membrane dedicated on roofs with full or part-boarding
- initial underlay for thermally insulated, ventilated, sloping roofs
- to be used to most types of roof coverage, particularly under ceramic, concrete and metal tiles
- recommended to attic and roof renovation in „the upside-down technology”

## Advantages:

- minimizes heat loss
- regulates two-way vapour permeability
- protects thermal-insulation against dampening
- three-layer product resistant to influence of weather conditions and ageing processes
- also available in version with 2 adhesive stripes (Corotop Classic 130+)



GRAMMATURE  
130 g/m<sup>2</sup>



REACTION TO FIRE  
CLASS E



VAPOUR  
PERMEABILITY (SD)  
0,02 m



RESISTANCE  
TO WATER PENETRATION  
CLASS W1



RESISTANCE TO UV  
3 MONTHS



RESISTANCE TO TEARING  
(NAIL SHANK) ALONG/ACROSS:  
160 N / 225 N

Name	Size	Colour	Package
Corotop® CLASSIC 130	1,5m x 50r.m. = 75m <sup>2</sup>	grey-anthracite	24 rolls
Corotop® CLASSIC 130+	1,5m x 50r.m. = 75m <sup>2</sup>	grey-anthracite	24 rolls

# Corotop® BLUE 140

The three-layer vapour permeable membrane highly resistant to mechanical damages and outside factors including UV-rays or high temperatures. It is characterised by high durability, guarantees comfort during application, even in difficult weather conditions. The product has also above-average technical parameters in its class.

### Application:

- the membrane dedicated on roofs with full or part-boarding
- initial underlay for thermally insulated, ventilated, sloping roofs
- to be used to most types of roof coverage, particularly under ceramic, concrete and metal tiles

### Advantages:

- minimizes heat loss
- regulates two-way vapour permeability
- protects thermoinsulation against damping
- enlarged grammature guarantees better mechanical resistance during installation and usage
- also available in version with 2 adhesive stripes (Corotop Blue 140+)



GRAMMATURE  
140 g/m<sup>2</sup>



REACTION TO FIRE  
CLASS E



VAPOUR  
PERMEABILITY (SD)  
0,02 m



RESISTANCE  
TO WATER PENETRATION  
CLASS W1



RESISTANCE TO UV  
3 MONTHS



RESISTANCE TO TEARING  
(NAIL SHANK) ALONG/ACROSS:  
165 N / 230 N

Name	Size	Colour	Package
Corotop® BLUE 140	1,5m x 50r.m. = 75m <sup>2</sup>	blue-anthracite	24 rolls
Corotop® BLUE 140+	1,5m x 50r.m. = 75m <sup>2</sup>	blue-anthracite	24 rolls

# Corotop® STRONG 160

The high-grammature membrane with strong structure. It does not break under heavy load or increased friction and thus it is recommended especially on fully-boarded roofs. Light colour reflects sun rays, what provides better insulation. Corotop Strong means the same quality for many years of usage and guaranteed durability.

## Application:

- the membrane dedicated on roofs with full or part-boarding
- initial underlay for thermally insulated, ventilated, sloping roofs
- to be used to most types of roof coverage, particularly under ceramic, concrete and metal tiles

## Advantages:

- minimizes heat loss
- regulates two-way vapour permeability
- protects thermal-insulation against damping
- the product extremely durable and resistant to damages
- also available in version with 2 adhesive stripes (Corotop Strong 160+)



GRAMMATURE  
160 g/m<sup>2</sup>



REACTION TO FIRE  
CLASS E



VAPOUR  
PERMEABILITY (SD)  
0,02 m



RESISTANCE  
TO WATER PENETRATION  
CLASS W1



RESISTANCE TO UV  
3 MONTHS



RESISTANCE TO TEARING  
(NAIL SHANK) ALONG/ACROSS:  
190 N / 275 N

Name	Size	Colour	Package
Corotop® STRONG 160	1,5m x 50r.m. = 75m <sup>2</sup>	beige-white	24 rolls
Corotop® STRONG 160+	1,5m x 50r.m. = 75m <sup>2</sup>	beige-white	24 rolls

# Corotop® EXTRA PROTECT 165

An extremely durable four-layer roof membrane produced in the „hot melt” process. Usage of the mesh and additional layer of vlies guarantee great resistance parameters. The membrane is recommended to clients searching strong and durable products providing prolonged roof liveness.

### Application:

- the membrane dedicated on roofs with full or part-boarding
- initial underlay for thermally insulated, ventilated, sloping roofs
- to be used to most types of roof coverage, particularly under ceramic and metal tiles

### Advantages:

- strengthened with a special polypropylene mesh
- minimizes heat loss
- regulates two-way vapour permeability
- the product with very high resistance to any damages
- also available in version with 2 adhesive stripes (Corotop Extra Protect 165+)



GRAMMATURE  
165 g/m<sup>2</sup>



REACTION TO FIRE  
CLASS E



VAPOUR  
PERMEABILITY (SD)  
0,07 m



RESISTANCE TO WATER  
PENETRATION  
CLASS W1



RESISTANCE TO UV  
3 MONTHS



RESISTANCE TO TEARING  
(NAIL SHANK) ALONG/ACROSS:  
350 N / 380 N

Name	Size	Colour	Package
Corotop® EXTRA PROTECT 165	1,5m x 50r.m. = 75m <sup>2</sup>	blue and white	20 rolls
Corotop® EXTRA PROTECT 165+	1,5m x 50r.m. = 75m <sup>2</sup>	blue and white	20 rolls



# Corotop® RED STRONG 180

Corotop Red Strong is a very durable, three-layer and highly vapour permeable membrane produced by thermobonding method which guarantees strong connection between layers. Using this membrane increases the safety during application and supports moves on a roof slope. It is recommended especially on fully-boarded roofs because of very good resistance parameters. Produced in an unique red colour, being the colour of the Corotop brand, the membrane is a synonyme of prestige and the highest quality and bestseller in our offer.

## Application:

- the membrane dedicated on roofs with full or part-boarding
- initial underlay for thermally insulated, ventilated, sloping roofs
- to be used to most types of roof coverage, particularly under ceramic, concrete and metal tiles

## Advantages:

- minimizes heat loss
- regulates two-way vapour permeability
- protects thermal-insulation against damping
- the product with unquestionable resistance parameters in its class
- the flagship Corotop product
- also available in version with 2 adhesive stripes (Corotop Red Strong 180+)



GRAMMATURE  
180 g/m<sup>2</sup>



REACTION TO FIRE  
CLASS E



VAPOUR  
PERMEABILITY (SD)  
0,02 m



RESISTANCE  
TO WATER PENETRATION  
CLASS W1



RESISTANCE TO UV  
3 MONTHS



RESISTANCE TO TEARING  
(NAIL SHANK) ALONG/ACROSS:  
250 N / 350 N

Name	Size	Colour	Package
Corotop® RED STRONG 180	1,5m x 50r.m. = 75m <sup>2</sup>	red-anthracite	20 rolls
Corotop® RED STRONG 180+	1,5m x 50r.m. = 75m <sup>2</sup>	red-anthracite	20 rolls

# Corotop® X-TREAM 190

Double-layer, high vapour permeable roof membrane composed of polyester fabric coated with thermally stable polyurethane film. The product of high strength parameters, invulnerable to mechanical damages, which affects the comfort during installation on the roof.

### Application:

- the membrane dedicated on roofs with full or part-boarding
- initial underlay for thermally insulated, ventilated, sloping roofs
- to be used to most types of roof coverage

### Advantages:

- minimizes heat loss
- protects thermal-insulation against damping
- temperature resistance up to 120°C
- high resistance to abrasion and scratches
- resistant to surfactants or oily substances



GRAMMATURE  
190 g/m<sup>2</sup>



REACTION TO FIRE  
CLASS E



VAPOUR  
PERMEABILITY (SD)  
0,13 m



RESISTANCE  
TO WATER PENETRATION  
CLASS W1



RESISTANCE TO UV  
3 MONTHS



RESISTANCE TO TEARING  
(NAIL SHANK) ALONG/ACROSS:  
180 N / 170 N

Name	Size	Colour	Package
Corotop® X-TREAM 190	1,5m x 50r.m. = 75m <sup>2</sup>	grey	20 rolls

# Corotop® ULTRA 220

An extremely durable, three-layer, highly vapour permeable membrane produced in a thermobonding technology. The product is highly resistant not only to mechanical damages, but also unfavourable weather conditions including UV-rays and high temperatures. This product is recommended especially on fully-boarded roofs and when a construction is exposed to heavy load. The membrane offered to clients who appreciate the best quality.

## Application:

- the membrane dedicated on roofs with full or part-boarding
- initial underlay for thermally insulated, ventilated, sloping roofs
- to be used to most types of roof coverage, particularly under ceramic and concrete tiles

## Advantages:

- minimize heat loss
- regulate two-way vapour permeability
- protects thermal-insulation against damping
- very high grammature guarantees extreme resistance to any damages
- also available in version with 2 adhesive stripes (Corotop Ultra 220+)



GRAMMATURE  
220 g/m<sup>2</sup>



REACTION TO FIRE  
CLASS E



VAPOUR PERMEABILITY  
(SD) 0,02 m



RESISTANCE  
TO WATER PENETRATION  
CLASS W1



RESISTANCE TO UV  
3 MONTHS



RESISTANCE TO TEARING  
(NAIL SHANK) ALONG/ACROSS:  
280 N / 400 N

Name	Size	Colour	Package
Corotop® ULTRA 220	1,5m x 50r.m. = 75m <sup>2</sup>	black	20 rolls
Corotop® ULTRA 220+	1,5m x 50r.m. = 75m <sup>2</sup>	black	20 rolls

# Corotop® FORCE PROTECT 235

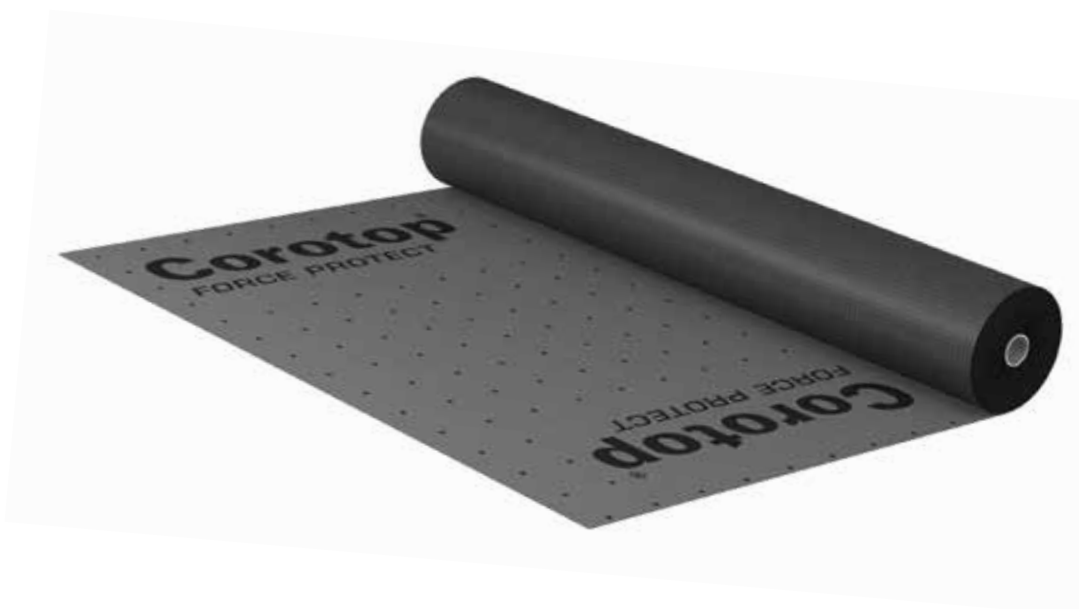
An Extremely durable, four-layer and highly vapour permeable roof membrane strengthened with special polyethylene mesh. The product's structure and its strength parameters guarantee the highest resistance to damages within other offered membranes branded Corotop. Thanks to four layers, the membrane ensures unbeatable parameters, unchangeable even under the influence of unfavourable weather conditions for many years. It also provides the safe application regardless of heavy loads. The product is dedicated to clients searching the best solutions on the roof membranes' market.

### Application:

- the membrane dedicated on roofs with full or part-boarding
- initial underlay for thermally insulated, ventilated, sloping roofs also with a not big slope
- to be used to most types of roof coverage, particularly under ceramic concrete and metal tiles

### Advantages:

- reinforced with specialised mesh of new generation
- guarantee optimal durability and resistance
- very high resistance to influence of weather conditions
- resistant to ageing processes
- also available in version with 2 adhesive stripes (Corotop Force Protect 235+)



GRAMMATURE  
235 g/m<sup>2</sup>



REACTION TO FIRE  
CLASS E



VAPOUR  
PERMEABILITY (SD)  
0,07 m



RESISTANCE  
TO WATER PENETRATION  
CLASS W1



RESISTANCE TO UV  
3 MONTHS



RESISTANCE TO TEARING  
(NAIL SHANK) ALONG/ACROSS:  
400 N / 425 N

Name	Size	Colour	Package
Corotop® FORCE PROTECT 235	1,5m x 50r.m. = 75m <sup>2</sup>	grey	15 rolls
Corotop® FORCE PROTECT 235+	1,5m x 50r.m. = 75m <sup>2</sup>	grey	15 rolls



# Corotop® POWER 250

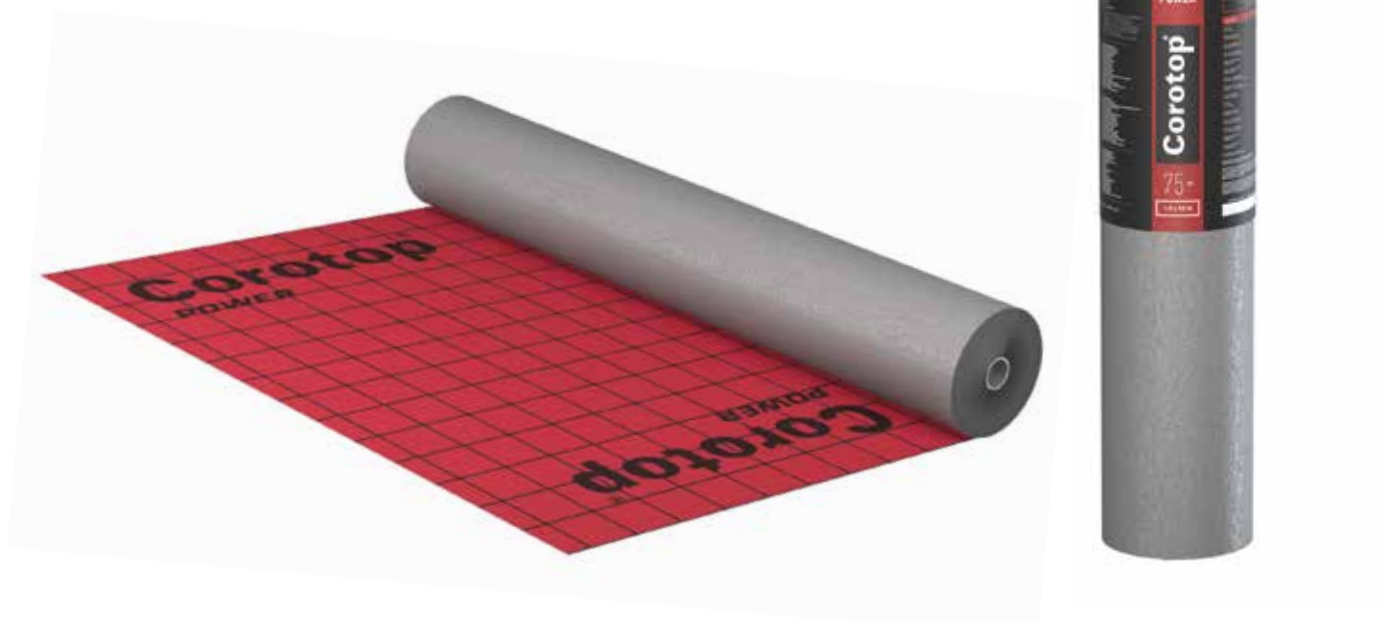
A highly vapour permeable membrane with a special, anti-condensation structure protects thermal-insulation, provides its liveness and durability for many years. Through usage of special needleloom fibre the membrane is able to absorb vapour surpluses which later on are successively released outside. This prevents against vapour condensation occurring during colder days. The product is recommended especially on roof coverages which are under the influence of high loads during application, as well as in any construction where the product's resistance to any external factors is particularly important.

## Application:

- the membrane dedicated on roofs with full or part-boarding
- initial underlay for thermally insulated, ventilated, sloping roofs also with a not big slope
- to be used to most types of roof coverage, particularly under ceramic concrete and metal tiles

## Advantages:

- Premium class membrane-connection of extreme resistance and high vapour permeability
- enriched with needleloom fibre-anticondensation layer
- high grammature provides resistance to highest loads
- a product's structure and the process used in production guarantee unusual resistance to external factors
- also available in version with 2 adhesive stripes (Corotop Power 250+)



GRAMMATURE  
250 g/m<sup>2</sup>



REACTION TO FIRE  
CLASS E



VAPOUR  
PERMEABILITY (SD)  
0,07 m



RESISTANCE  
TO WATER PENETRATION  
CLASS W1



RESISTANCE TO UV  
3 MONTHS



RESISTANCE TO TEARING  
(NAIL SHANK) ALONG/ACROSS:  
250 N / 275 N

Name	Size	Colour	Package
Corotop® POWER 250	1,5m x 50r.m. = 75m <sup>2</sup>	maroon-grey	15 rolls
Corotop® POWER 250+	1,5m x 50r.m. = 75m <sup>2</sup>	maroon-grey	15 rolls

# Corotop® MONO 330

Roof membrane composed of two layers of high-grammature nonwoven polypropylene with polyurethane film layer, produced in „hot melt” process. It stands out by extremely high resistance to mechanical damages and twice longer resistance to UV-rays in relation to other roof membranes, which significantly affects the comfort of construction work.

### Application:

- membrane dedicated on roofs with full boarding
- initial underlay for thermally insulated, ventilated, sloping roofs
- to be used to most types of roof coverage
- the possibility of apply starting from 2° sloping surface (for a membrane with adhesive stripe)

### Advantages:

- minimizes heat loss
- protects thermoinsulation against dampening
- high grammature guarantee the highest load resistance
- considerably extended UV resistance due to unique composition of the product and used technological process
- also available in version with 2 adhesive stripes (Corotop Mono 330+)



GRAMMATURE  
330 g/m<sup>2</sup>



REACTION TO FIRE  
CLASS E



VAPOUR  
PERMEABILITY (SD)  
0,2 m



RESISTANCE  
TO WATER PENETRATION  
CLASS W1



RESISTANCE TO UV  
6 MONTHS



RESISTANCE TO TEARING  
(NAIL SHANK) ALONG/ACROSS:  
320 N / 340 N

Name	Size	Colour	Package
Corotop® MONO 330	1,5m x 25r.m. = 37,5m <sup>2</sup>	grey	15 rolls
Corotop® MONO 330+	1,5m x 25r.m. = 37,5m <sup>2</sup>	grey	15 rolls

# Corotop® BITUM 450

Tree-layer bituminous membrane consisting of a layer of nonwoven polypropylene, nonwoven polyester and the bituminous insert. It is highly watertight and have a high resistance to tearing. Enriched stabilization components giving UV resistance from 4 to 12 months which allows roofing assembly with a delay.

## Application:

- the membrane dedicated on roofs with full boarding
- initial underlay for thermally insulated, ventilated, sloping roofs
- under roofing from bituminous shingles, bituminous tiles, roofing slate and wooden shingle

## Advantages:

- higher UV resistance
- watertight
- highly resistant to tearing
- possible assembly of the final roofing on the membrane without using of battens and counter battens



GRAMMATURE  
450 g/m<sup>2</sup>



REACTION TO FIRE  
CLASS E



VAPOUR  
PERMEABILITY (SD)  
50 m



RESISTANCE  
TO WATER PENETRATION  
CLASS W1



RESISTANCE TO UV  
<12 MONTHS



RESISTANCE TO TEARING  
(NAIL SHANK) ALONG/ACROSS:  
150 N / 150 N

Name	Size	Colour	Package
Corotop® BITUM 450	1m x 30r.m. = 30m <sup>2</sup>	black	50 rolls

# Corotop<sup>®</sup> METAL 440

A product made of the three-layer Corotop membrane and a drainage mat with specially designed weave placed from the external side. The drainage mat provides distance between used metal sheets and the membrane creating a durable and effective roof coverage system. The membrane is resistant to influence of high temperatures and UV-rays. It ensures optimal ventilation as well as vapour permeability at the same time.

### Application:

- under roof coverage from flat metal sheets placed on both ventilated and not ventilated boarded roofs
- on slope roofs covered with flat metal sheets
- recommended under any types of standing seam or overlap steel sheets

### Advantages:

- protects roof steel sheets against corrosion
- suppresses sounds of atmospheric precipitation and provides great acoustics
- guarantees roof's ventilation in a metal sheets roof coverage
- a special drainage mat prevents a roof membrane from overheating
- easy in application
- also available in version with 2 adhesive stripes (Corotop Metal 440+)



GRAMMATURE  
440 g/m<sup>2</sup>



REACTION TO FIRE  
CLASS E



VAPOUR  
PERMEABILITY (SD)  
0,02 m



RESISTANCE  
TO WATER PENETRATION  
CLASS W1



RESISTANCE TO UV  
3 MONTHS



RESISTANCE TO TEARING  
(NAIL SHANK) ALONG/ACROSS:  
210 N / 270 N

Name	Size	Colour	Package
Corotop <sup>®</sup> METAL 440	1,5m x 25r.m. = 37,5m <sup>2</sup>	grey-white	8 rolls
Corotop <sup>®</sup> METAL 440+	1,5m x 25r.m. = 37,5m <sup>2</sup>	grey-white	8 rolls



# Corotop® OPLLOT 250

A three-dimensional, multifunctional mat in a form of wrap which is a separation and drainage layer. It provides air circulation and allows transfer of water and vapour from the roof and facade metal sheet coverage.

## Application:

- under ventilated, thermo- and not thermoinsulated, slope and boarded roofs
- under standing seam steel sheets
- in ventilated and not ventilated metal elevetaions

## Advantages:

- light and easy in application
- suppresses sounds of atmospheric precipitation and provides great acoustics
- protects initial roof coverage



Name	Size	Colour	Package
Corotop® OPLLOT 250	1,4m x 30r.m. = 42m <sup>2</sup>	black	9 rolls

# Corotop® OPLOT 300

A three-dimensional, multifunctional mat in a form of wrap which is a separation and drainage layer. It provides air circulation and allows transfer of water and vapour from the roof and facade metal sheet coverage.

### Application:

- under ventilated, thermo- and not thermoinsulated, slope and boarded roofs
- under standing steam steel sheets
- in ventilated and not ventilated metal elevetaions

### Advantages:

- light and easy in application
- suppresses sounds of atmospheric precipitation and provides great acoustics
- protects initial roof coverage



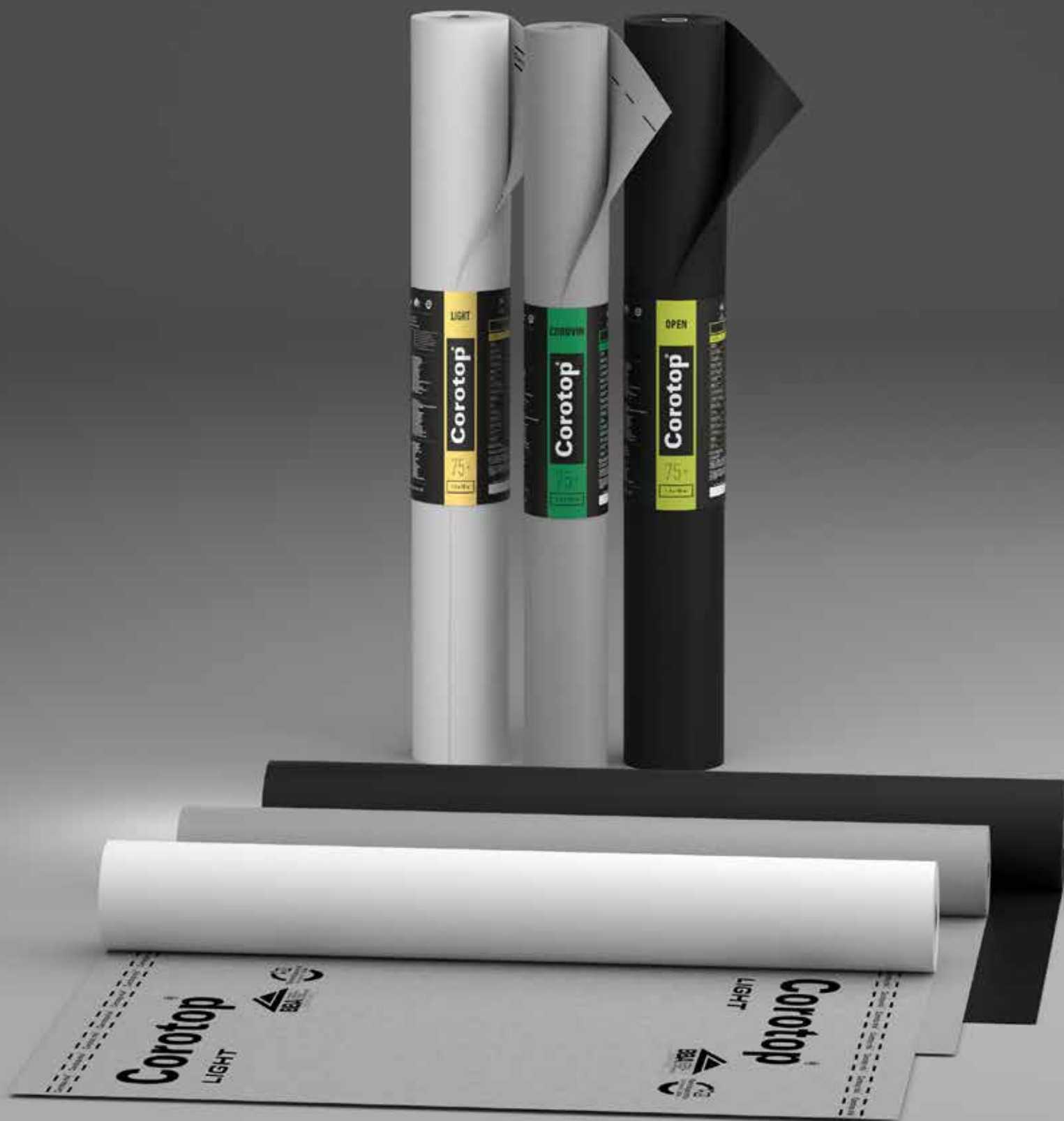
Name	Size	Colour	Package
Corotop® OPLOT 300	1,4m x 30r.m. = 42m <sup>2</sup>	black	9 rolls

**„ADVERSITY  
CAUSES SOME MEN  
TO BREAK; OTHERS  
TO BREAK RECORDS.”**

**- William A. Ward -**



# SYSTEMS OF FACADE MEMBRANES





# CoroVIN® 100

Corovin wind insulation is a single-layer, high vapour-permeable product. It protects walls against heat shortages caused by draught. It also prevents buildings from damping as well as blowing away and collecting of any contamination. Corovin cannot be applied on roofs because it does not have required water tightness W1 Class.

### Application:

- on external building walls in a wood or steel frame construction and in houses isolated with thermal wool
- on inside house walls made of logs
- in ventilated elevation systems
- under siding (wofromen, PVC, fiberglass etc.)

### Advantages:

- light and easy in application
- protects building's elevation by increasing its durability
- increases building's energy-saving and eliminates heat shortages through walls



GRAMMATURE  
100 g/m<sup>2</sup>



REACTION TO FIRE  
CLASS E



VAPOUR  
PERMEABILITY (SD)  
0,01 m



RESISTANCE TO UV  
3 MONTHS



RESISTANCE TO TEARING  
(NAIL SHANK) ALONG / ACROSS:  
135 N / 180 N

Name	Size	Colour	Package
CoroVIN® 100	1,5m x 50r.m. = 75m <sup>2</sup>	grey	35 rolls

# Corotop® OPEN 160

Two-layer elevation membrane made from nonwoven polypropylene covered by polyurethane film. Applied film not only provides protection against moisture from the outside and a correct flow of water vapour through the wall but also excellent protection against weather conditions, showing UV resistance even up to 6 months.

**Application:**

- on external building walls in a wood or steel frame construction and in houses isolated with thermal wool
- on inside house walls made of logs
- in ventilated elevation systems
- under siding (wooden, PVC, fiberglass etc.)

**Advantages:**

- light and easy in application
- protects building's facade by increasing its resistance
- increases building's energy-saving and eliminates heat shortages through walls
- UV resistant to 6 months



 GRAMMATURE 160 g/m <sup>2</sup>	 REACTION TO FIRE CLASS E	 VAPOUR PERMEABILITY (SD) 0,2 m	 RESISTANCE TO WATER PENETRATION CLASS W1	 RESISTANCE TO UV 6 MONTHS	 RESISTANCE TO TEARING (NAIL SHANK) ALONG / ACROSS: 160 N / 210 N
------------------------------------------------------------------------------------------------------------------------	-----------------------------------------------------------------------------------------------------------------	--------------------------------------------------------------------------------------------------------------------------	------------------------------------------------------------------------------------------------------------------------------------	-------------------------------------------------------------------------------------------------------------------	--------------------------------------------------------------------------------------------------------------------------------------------------------------

Name	Size	Colour	Package
Corotop® OPEN 160	1,5m x 50r.m. = 75m <sup>2</sup>	black	24 rolls

**„NEVER GIVE UP  
ON A DREAM JUST  
BECAUSE OF THE TIME  
IT WILL TAKE TO  
ACCOMPLISH IT.  
THE TIME WILL PASS  
ANYWAY.”**

**- H. Jackson Brown -**



# VAPOUR BARRIER SYSTEMS



# Corotop® ACTIVE CONTROL

Two- layer vapour insulation based on polypropylene fibre. The product is actively vapour-permeable and can be applied on roofs, walls and floors as the vapour-permeability regulator. Thanks to modern technology it creates an active water vapour-barrier and eliminates the „plastic bag” effect, which can be a reason for mildew arise.

## Application:

- to attics, walls and ceilings
- recommended in rooms where increased vapour level is generated
- applied as a complementary product with high vapour permeable membrane in a roof system

## Advantages:

- light and easy application
- protects thermal insulation againts damaging water and damp influence
- prevents from mildew arise
- helps to sustain healthy and fresh climate at the attic
- actively regulates vapour level in a room



GRAMMATURE  
100 g/m<sup>2</sup>



REACTION TO FIRE  
CLASS E



VAPOUR  
PERMEABILITY (SD)  
15 m



PERMEABILITY VOLUME  
5-6 g/m<sup>2</sup>/24h



RESISTANCE TO TEARING  
(NAIL SHANK) ALONG / ACROSS:  
120 N / 160 N

Name	Size	Colour	Package
Corotop® ACTIVE CONTROL	1,5m x 50r.m. = 75m <sup>2</sup>	yellow-white	35 rolls

# Corotop<sup>®</sup> METALLIC

The vapour barrier which is a combination of nonwoven polypropylene with a layer of aluminum screen. Thanks to the reflective coating reflects heat radiation and increases energy efficiency of rooms. Product resistant to mechanical damage.

**Application:**

- to attics, walls and ceilings

**Advantages:**


- reflective coating reduces heat loss
- protects thermal insulation against harmful water and damp influence
- prevents from mildew arise
- helps to sustain healthy and fresh climate at the attic



 GRAMMATURE  
80 g/m<sup>2</sup>

 REACTION TO FIRE  
CLASS E

 VAPOUR  
PERMEABILITY (SD)  
40 m

 RESISTANCE TO TEARING  
(NAIL SHANK) ALONG / ACROSS:  
40 N / 60 N

Name	Size	Colour	Package
Corotop <sup>®</sup> METALLIC	1,5m x 50r.m.=75m <sup>2</sup>	aluminium-beige	50 rolls



# Corotop® REFLEX

This product is made of two layers of vapour-barrier polypropylene and aluminium screen, which reflects 60% of heat radiation. It is very durable and resistant to mechanical damages. It can be applied with all kinds of roof coverage.

**Application:**

- to attics, walls and ceilings

**Advantages:**


- reduces heat shortages thanks to the reflective layer
- protects thermal-insulation against damaging influence of water and moisture
- prevents from mildew arise
- helps to sustain healthy and fresh climate at the attic
- actively regulates vapour level in a room
- increases energy efficiency of rooms



 GRAMMATURE  
115 g/m<sup>2</sup>

 REACTION TO FIRE  
CLASS E

 VAPOUR  
PERMEABILITY (SD)  
40 m

 RESISTANCE TO TEARING  
(NAIL SHANK) ALONG / ACROSS:  
125 N / 170 N

Name	Size	Colour	Package
Corotop® REFLEX	1,5m x 50r.m. = 75m <sup>2</sup>	aluminium-beige	30 rolls

# Corotop® VARIANT

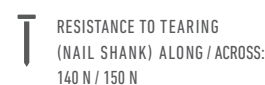
Two-layer active membrane with variable vapour permeability, made of nonwoven polypropylene and copolymer of polyethylene functional film. In winter, when the temperature in the building is higher than surroundings and relative humidity of air is low, the vapour stream passes from the inside to the outside. Under such conditions the film pores are closed and the product shows a vapour barrier properties and prevents humidity from condensing in the partition. In summer, steam flows through the opposite direction - from the outside to the inside and the humidity is relatively high. Film remains open and vapour permeable, providing evaporation of moisture from partition.

**Application:**

- to attics, walls and ceilings

**Advantages:**

- shows a variable water vapour diffusion
- protects thermal-insulation against harmful influence of water and moisture
- prevents from mildew arise
- helps to sustain healthy and fresh climate at the attic



Name	Size	Colour	Package
Corotop® VARIANT	1,5m x 50r.m.=75m <sup>2</sup>	white	35 rolls



**„TALENT  
WINS GAMES,  
BUT  
TEAMWORK  
AND  
INTELLIGENCE  
WINS  
CHAMPIONSHIPS.”**

- Michael Jordan -

# SYSTEMS OF SPECIALISED TAPES



The double-sided adhesive tape. It is produced from the acrylic dispersion reinforced with polyester fibres. The product is resistant to UV-rays.

### Application:

- for bonding and fixing the polypropylene and polyethylene plastic foils
- for connecting foil with plastics, concrete, wood and metal

### Advantages:

- double-sided
- excellent adhesive properties
- universal- to be used on both smooth and rough surfaces
- resistant to different weather conditions including extreme temperatures



RESISTANCE TO BREAKING  
≥20N / 25mm



TAPE THICKNESS  
0,22-0,24 mm



OPERATING TEMPERATURE  
from +10°C to +30°C



TEMPERATURE RESISTANCE  
from -20°C to +80°C

Name	Size	Package
Corotop® MIX	20mm x 25r.m.	12 pieces / 1 piece
Corotop® MIX	20mm x 50r.m.	12 pieces
Corotop® MIX	40mm x 25r.m.	7 pieces



transparent

# Corotop® FIX

The multiseason single-sided adhesive tape. It is produced from the acrylic dispersion reinforced with polyester fibres to have better adhesiveness properties.

**Application:**

- for bonding and fixing the polypropylene and polyethylene plastic foils
- for connecting foil with plastics, concrete, wood and metal
- to be used inside building structures

**Advantages:**

- bonds following membranes' and foils' layers together
- connects foils with other plastics
- effectitvely repairs damages
- universal- to be used on both smooth and rough surfaces
- resistant to oils as well as acid and alkaline environment



RESISTANCE TO BREAKING  
≥20N / 25mm



TAPE THICKNESS  
0,26-0,29 mm



OPERATING TEMPERATURE  
from +5°C to +40°C



TEMPERATURE RESISTANCE-  
from -40°C to +80°C

Name	Size	Package
Corotop® FIX	50mm x 25r.m.	12 pieces / 1 piece



transparent



The single-sided tape made of high vapour permeable membrane and acrylic dispersion. It maintains high vapour permeability of the foil, even in the repaired damaged place. It is resistant to UV-rays.

**Application:**

- for bonding products based on polypropylene
- for fixing damages in foils based on polypropylene

**Advantages:**

- high vapour-permeable
- effectively repairs and glues existed mechanical damages
- universal- to be used on both smooth and rough surfaces
- resistant to different weather conditions



RESISTANCE TO BREAKING  
≥10N / 25mm



TAPE THICKNESS  
0,5-0,53 mm



OPERATING TEMPERATURE  
from +10°C to +30°C



TEMPERATURE RESISTANCE-  
from -30°C to +90°C

Name	Size	Package
Corotop® BAND	50mm x 25r.m.	12 pieces / 1 piece



# Corotop® BUTYL

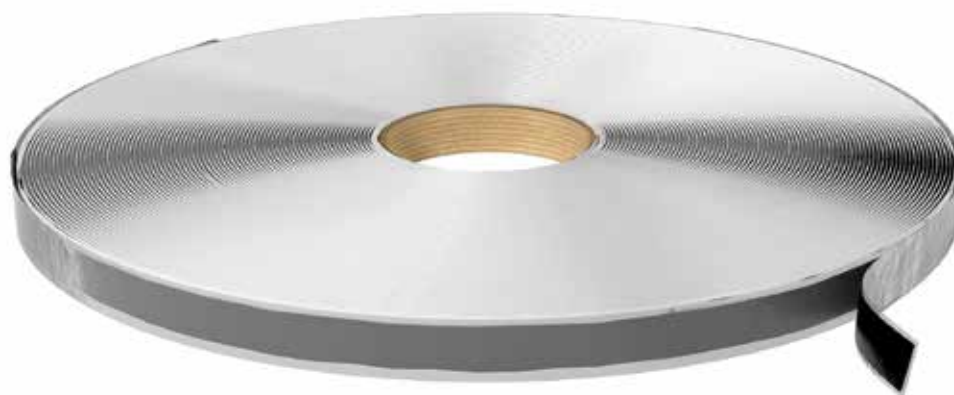
The double-sided, waterproof, butile-based tape with a foil spacer. It reduces vapour permeability. The tape is not resistant to solvents. It is resistant to UV rays.

### Application:

- for bonding roof, vapour-barrier and foundation foils
- for sealing joints of a foil and other materials
- for bonding other materials such as plastics, concrete and steel

### Advantages:

- effectively seals and bonds a wide scope of materials
- adhesiveness properties increase within time
- the tape permanently plastic
- universal- to be used on both smooth and rough surfaces
- resistant to moisture and water
- resistant to different weather conditions




 TAPE THICKNESS  
 1,2 mm


 OPERATING TEMPERATURE  
 from +5°C to +40°C


 TEMPERATURE RESISTANCE-  
 from -30°C to +70°C

Name	Size	Package
Corotop® BUTYL	15mm x 25r.m.	1 piece



black

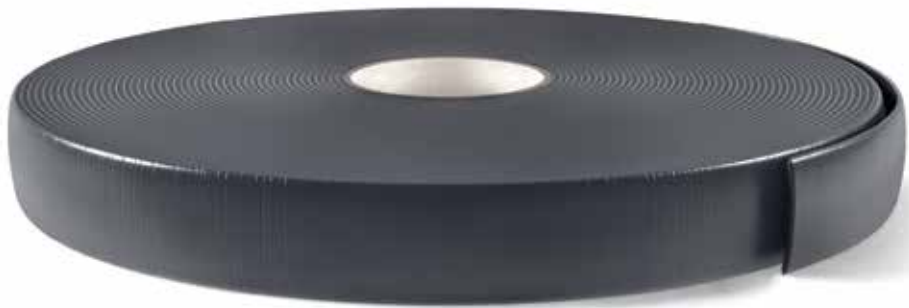
A self-adhesive sealing tape made of closed-cell, cross-linked polyethylene. It is characterised with high thermal-insulation and chemical resistance properties.

**Application:**

- to seal the contact points of the roof membrane and counter battens with rafter framing

**Advantages:**

- successively and permanently seals vulnerable areas
- prevents water intrusion into thermal-insulation
- eliminates discrepancies between counter-battens, a roof membrane and rafter framing



↓ TAPE THICKNESS  
↑ 3 mm

✓ OPERATING TEMPERATURE  
from 0°C

TEMPERATURE RESISTANCE-  
from -30°C to +100°C

Name	Size	Package
Corotop® PUR	40mm x 30r.m.	12 pieces
Corotop® PUR	50mm x 30r.m.	18 pieces
Corotop® PUR	60mm x 30r.m.	16 pieces

●  
grey

# Corotop® FLEX

The polypropylene single-sided adhesive tape covered with aluminium. It protects against moisture and solvent penetration. It is resistant to UV-rays and ageing processes.

### Application:

- for bonding aluminium foils
- for fixing damages in aluminium foils
- as bonding element in ventilating, air-conditioning and heating systems

### Advantages:

- good adherence properties
- isolates vapour and moisture
- universal- to be used on both smooth and rough surfaces
- universal application



RESISTANCE TO BREAKING  
100 N / 25mm



TAPE THICKNESS  
0,051 mm



ADHESION TO STEEL  
5 N / 25 mm



TEMPERATURE RESISTANCE  
from +10°C to +80°C

Name	Size	Package
Corotop® FLEX	50mm x 50r.m.	36 pieces
Corotop® FLEX	75mm x 50r.m.	24 pieces



silver

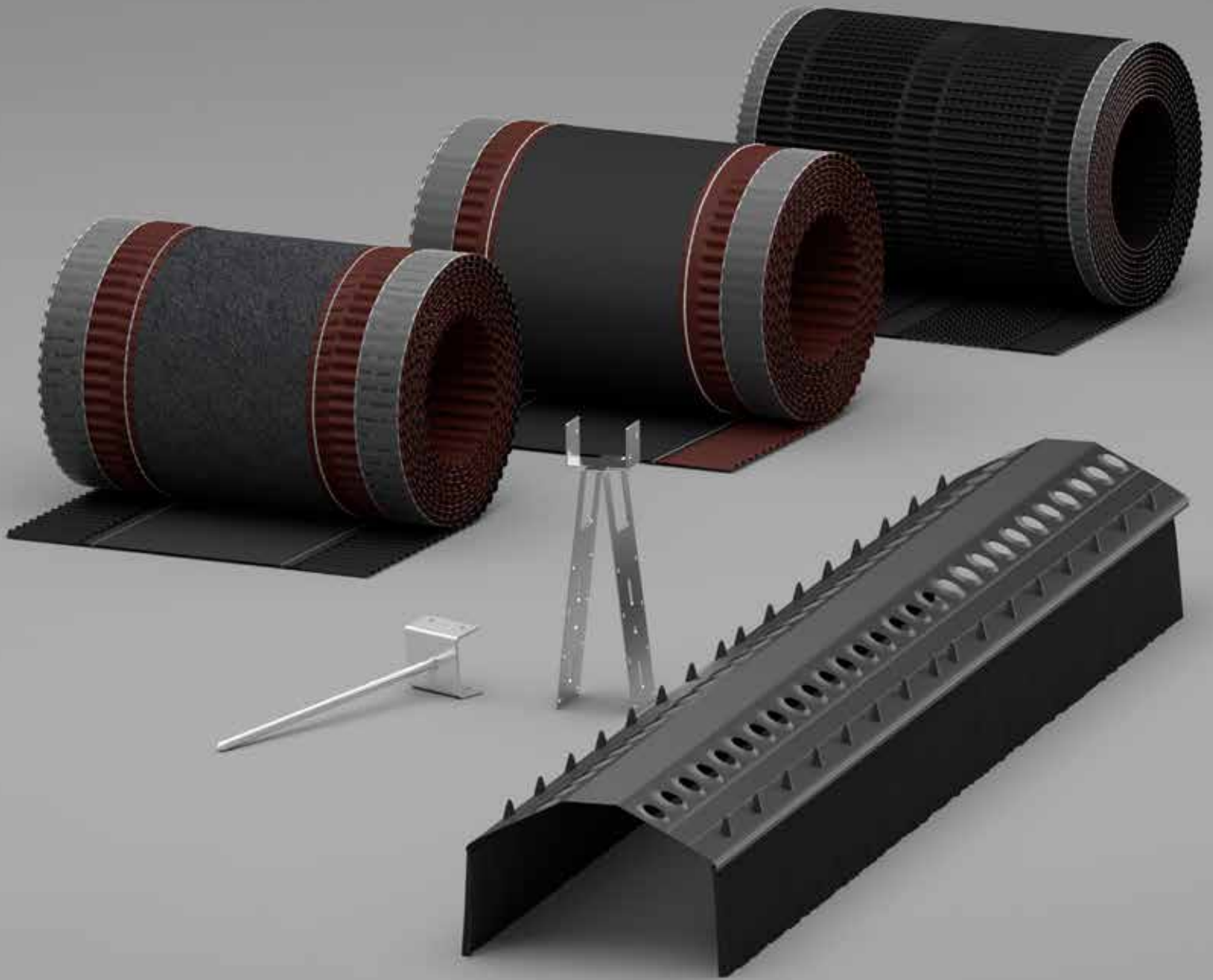
**„IN ORDER  
TO ACHIEVE SUCCESS,  
YOU NEED  
TO FALL IN LOVE  
WITH HARD WORK  
IN THE FIRST PLACE.”**

**- Mary Laurretta -**





# SYSTEMS OF RIDGE PRODUCTS





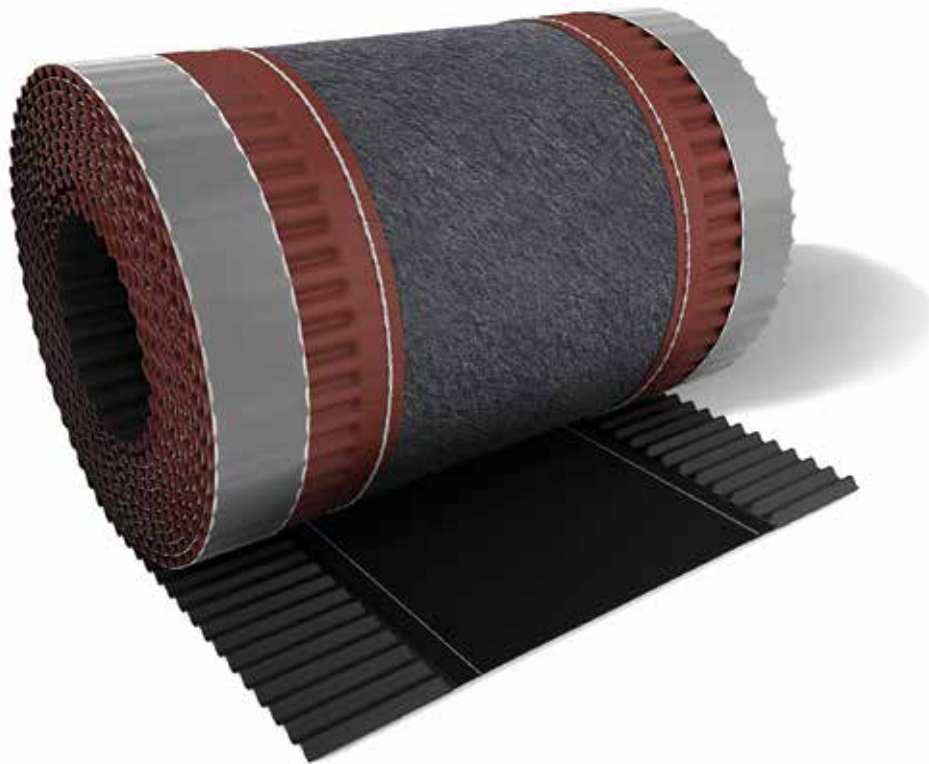
The ridge tape made of two pleated aluminium strips and double layer fabric (PP and geotextile), particularly resistant to UV-rays. It can be easily installed thanks to 30mm wide self-adhesive butyle stripes and flexible, profiled edges. Resistant to mechanic damages, weather conditions and UV-rays.

### Application:

- A specialist ridge tape with prolonged life, thanks to usage of high quality resistant to UV stabilising products

### Advantages:

- seals and ventilates ridge space
- protects against atmospheric rainfalls
- improves the process of transferring waterflow from vulnerable areas
- universal- installation on each type of roof coverage
- resistant to UV-rays
- easy application
- sewn and glued



WIDTH OF THE ADHESIVE LAYER  
30 mm



THE THICKNESS OF ALUMINIUM  
0,14 mm



OPERATING TEMPERATURE  
from +5°C to +40°C

Name	Size	Package
CoroVENT®	320mm x 5r.m.	4 rolls

3009

chestnut

7021

anthracite

8004

brick red

8017

light brown

9005

black

Additional colours and sizes available on request.

# CoroVENT® E

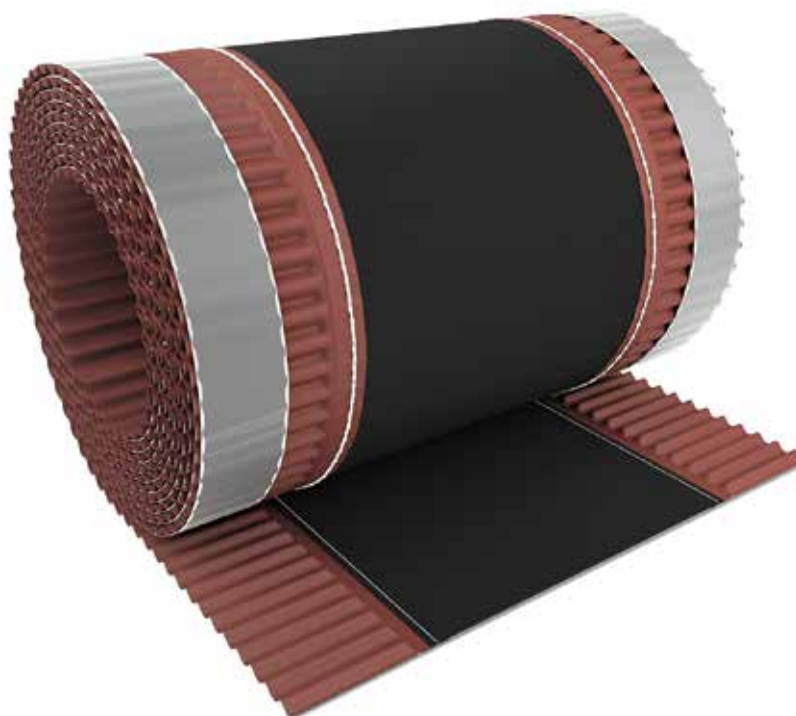
The high-vapor permeable ridge tape made of two pleated aluminium strips and high quality polypropylene fabric. Flexible profiled edges provides the easy installation on any type of roof coverings. Additionally equipped with 30mm wide self-adhesive butile stripes. Resistant to mechanic damages, weather conditions and UV-rays.

### Application:

- a specialist sealing & ventilating tape under ridge and ridge tiles

### Advantages:

- seals and ventilates ridge space
- protects against atmospheric rainfalls
- improves the process of transferring waterflow from vulnerable areas
- universal- installation on each type of roof coverage
- wide scope of tape's dimensions
- easy application
- sewn and glued



 WIDTH OF THE ADHESIVE LAYER  
15mm / 30mm

 THE THICKNESS OF ALUMINIUM  
0,14 mm

 OPERATING TEMPERATURE  
from +5°C to +40°C

Name	Size	Package
CoroVENT® E	180mm x 5r.m.	4 rolls
CoroVENT® E	240mm x 5r.m.	4 rolls
CoroVENT® E	310mm x 5r.m.	4 rolls
CoroVENT® E	390mm x 5r.m.	4 rolls

**3009**  
chestnut

**7021**  
anthracite

**8004**  
brick red

**8017**  
light brown

**8019**  
dark brown

**9005**  
black

Additional colours and sizes available on request.

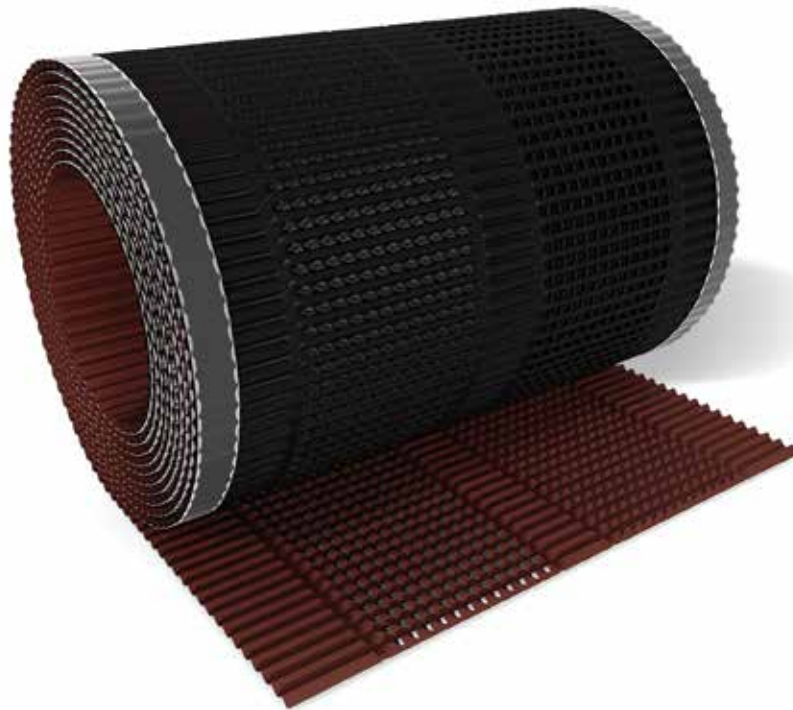
The aluminium ridge tape with micro-ventilating holes and self-adhesive butile stripes. Resistant to ageing processes as well as the influence of weather conditions, including UV -rays.

**Application:**

- a specialist ridge tape

**Advantages:**

- seals and ventilates ridge space
- protects against atmospheric falls and contamination
- universal - installation on each type of roof coverage
- easy application



WIDTH OF THE ADHESIVE LAYER  
15 mm



THE THICKNESS OF ALUMINIUM  
0,14 mm



OPERATING TEMPERATURE  
from +5°C to +40°C



TEMPERATURE RESISTANCE  
from -40°C to +90°C

Name	Size	Package
CoroVENT® M	300mm x 5r.m.	4 rolls
CoroVENT® M	400mm x 5r.m.	4 rolls



chestnut



anthracite



brick red



light brown



black

Additional colours and sizes available on request.

# CoroVENT® S

An universal ridge vent with a brush which protects the ridge against water infiltration and contamination intrusion. The vent system prevents from moisture accumulation under a roof coverage. It is made of elastic PVC which makes the product easy to be fitted to the roof covering.

**Application:**

- to be used to seal and ventilate ridge tiles and roof corners

**Advantages:**

- universal
- brush protects against contamination
- fits into tiles' shape



LENGTH  
1000 mm

WIDTH  
200 mm

BRUSH LENGTH  
75 mm

TEMPERATURE RESISTANCE  
from -40°C to +90°C

Name	Size	Package
CoroVENT® S	190mm x 1000mm	20 pieces



chestnut



anthracite



brick red



light brown



black

Additional colours and sizes available on request.

The ridge batten support type nail made of high grade galvanized steel. The shape of the nail enables easy, stable and quick height adjustment of ridge elements being installed. The support's distance and the length of the nail are adjusted to the most common used ridge battens.

**Application:**

- a ridge batten support

**Advantages:**

- easy and stable installation
- improves levelling a ridge batten
- helps to install a ridge tile



 LENGTH  
210 / 260 mm

 BRACKET SPACING  
40 / 50 mm

Name	Size	Package
CoroBLACH®	40mm x 210mm	100 pieces
CoroBLACH®	40mm x 260mm	100 pieces
CoroBLACH®	50mm x 210mm	100 pieces

  
galvanized

Additional sizes available on request.



# CoroBLACH®

The ridge batten support type plate. It is made of high grade galvanized steel which makes it resistant to cracking, ageing processes or damaging influence of weather conditions. The shape of the support enables easy, stable and quick height adjustment and levelling of ridge battens in ventilated sloping roofs.

### Application:

- a ridge batten support

### Advantages:

- easy and stable installation
- improves levelling a ridge batten
- helps to install a ridge tile



 LENGTH  
210 mm

 BRACKET SPACING  
40 / 50 mm

Name	Size	Package
CoroBLACH®	40mm x 210mm	100 pieces
CoroBLACH®	50mm x 210mm	100 pieces

  
galvanized

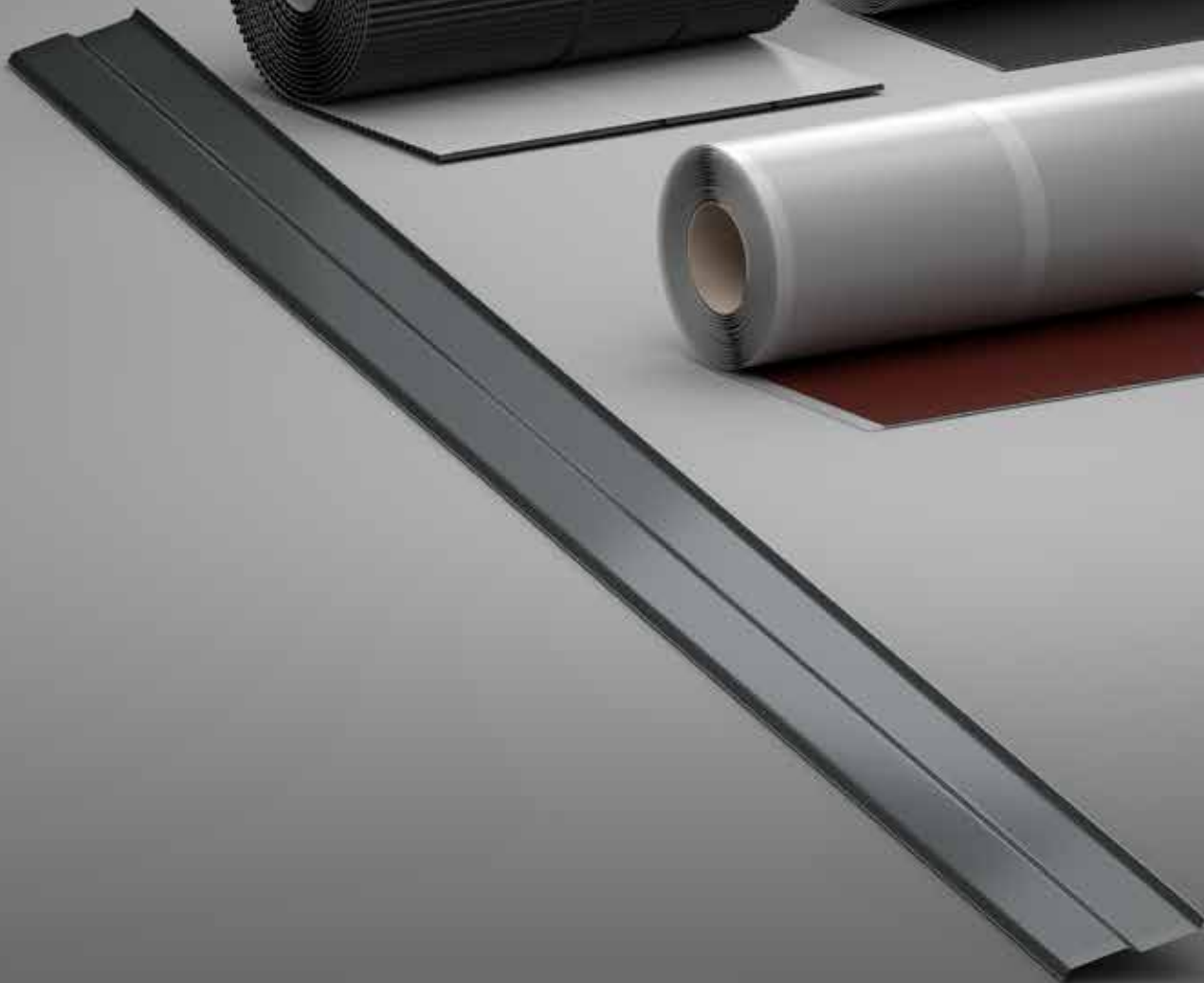
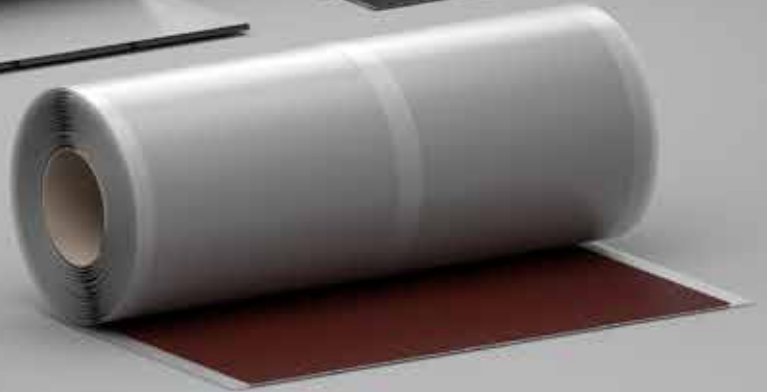
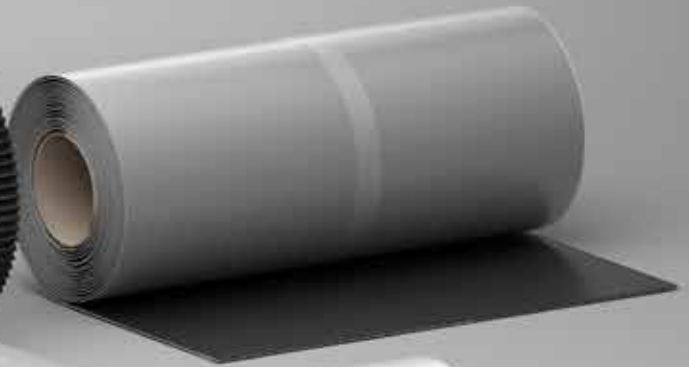
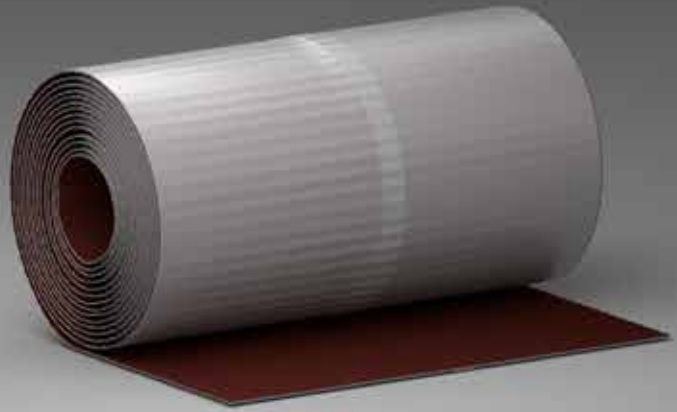
Adjustable version available on request. Additional sizes available on request.

**„WINS ONLY ONE  
WHO HAS  
A CLEARLY  
DEFINED GOAL  
AND  
AN IRRESISTIBLE  
DESIRE  
TO ACHIEVE IT.”**

**- Napoleon Hill -**



# SYSTEMS OF CHIMNEY PRODUCTS



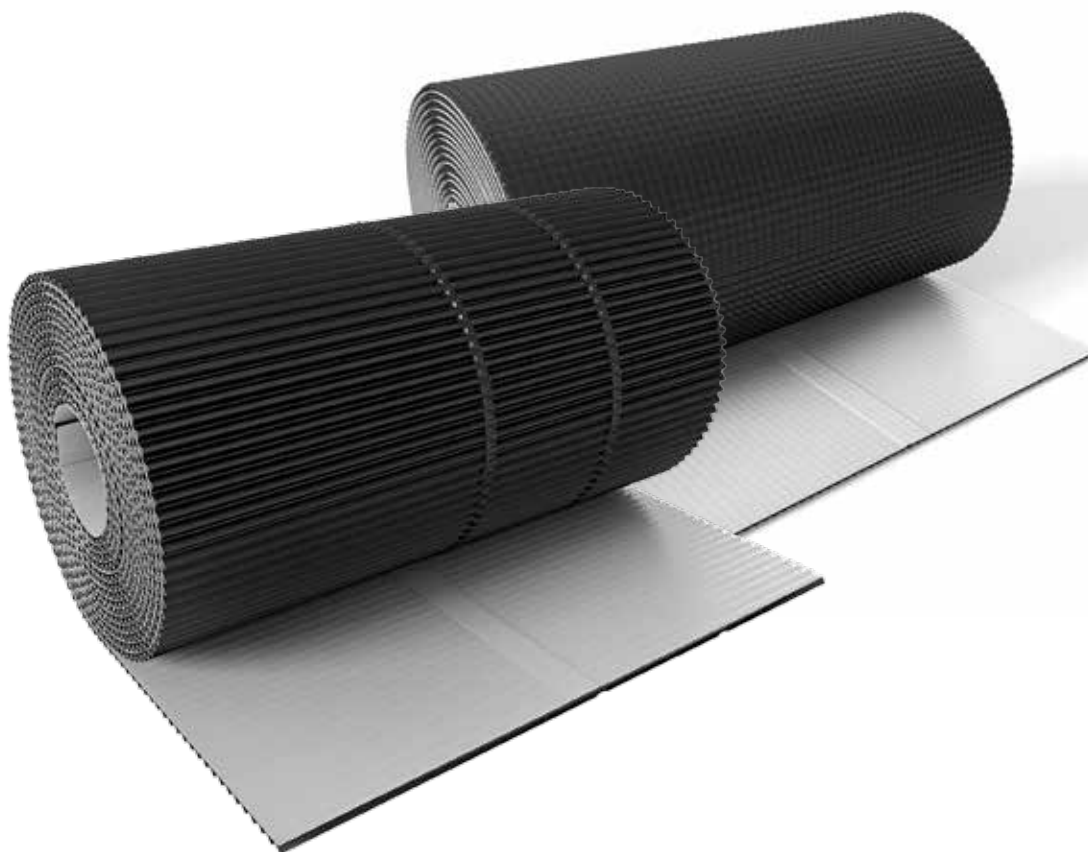
A self-adhesive flexible chimney tape made of aluminium. It is covered on its whole surface with an adhesive butile layer. The tape is resistant to UV-rays and ageing processes as well as the influence of weather conditions.

**Application:**

- tape designed to seal any abutments with chimneys, roof windows (skylights) and bay windows

**Advantages:**

- available in two types- pleated or pressed
- a great hydro-insulation barrier
- universal- joins with any material and surface
- easy installation
- immediate sealing



THE THICKNESS OF ALUMINIUM  
0,14 mm



BUTYL THICKNESS  
1,00 mm



OPERATING TEMPERATURE  
from +5°C to +40°C



TEMPERATURE RESISTANCE  
from -40°C to +90°C

Name	Size	Package
CoroMIN® ALU pleated	300mm x 5r.m.	1 rolls
CoroMIN® ALU pressed	300mm x 5r.m.	1 rolls



chestnut



anthracite



brick red



light brown



dark brown



black

Additional sizes available on request.

# Corotop® ALUFLEX

A self-adhesive chimney tape strengthened with the aluminium net fully covered with grey butyl. The Butyl is protected by a 2-parts silicone divider. The elastic structure as well as the butyl layer used on the whole adhesive cover allows excellent fitting to any surface.

### Application:

- a professional tape used to seal chimneys, roof windows and hatches

### Advantages:

- unusually elastic
- easy installation
- great adhesiveness properties
- connects with any surface and material



THICKNESS  
2,00 mm



BUTYL THICKNESS  
1,00 mm



OPERATING TEMPERATURE  
from +5°C to +40°C



TEMPERATURE RESISTANCE  
from -30°C to +80°C

Name	Size	Package
Corotop® ALUFLEX	300mm x 5r.m.	2 rolls



brick red



light brown



black

Additional colours available on request.



Self-adhesive lead chimney tape covered with butyl. It creates a barrier to atmospheric rainfalls. Resistant to different weather conditions including UV-rays.

**Application:**

- a tape used to seal chimneys, roof windows and hatches

**Advantages:**

- durable and resistant
- great hydro-insulation
- universal- joins with any material and surface



LEAD THICKNESS  
0,5 mm



BUTYL THICKNESS  
1,00 mm



OPERATING TEMPERATURE  
from +5°C to +40°C



TEMPERATURE RESISTANCE  
from -40°C to +90°C

Name	Size	Package
CoroBLEI® B	300mm x 5r.m.	1 roll

**7016**  
anthracite

**8004**  
brick red

**8015**  
chestnut

**8017**  
light brown

**9005**  
black

Additional colours available on request.

# CoroMIN® PB

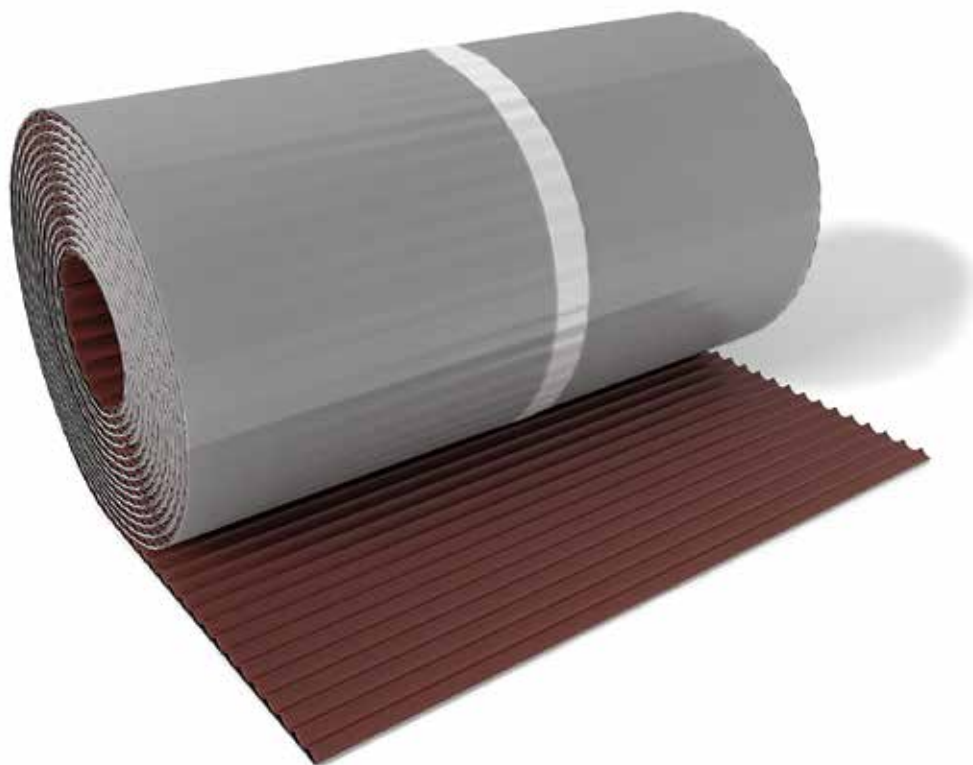
A self-adhesive pleated chimney tape made of lead and butyl layers. Coromin Pb distinguishes by its exceptional flexibility, what makes the installation easier. It is resistant to ageing processes and harmful influence of atmospheric conditions including UV-rays.

### Application:

- a tape used to seal chimney, roof windows and roof hatches

### Advantages:

- easy and fast chimney, roof windows and roof hatches working
- protects against unfavourable wind influence and atmospheric rainfalls
- universal - bonds on both smooth and rough surfaces



LEAD THICKNESS  
0,3 mm



BUTYL THICKNESS  
1,00 mm



OPERATING TEMPERATURE  
from +5°C to +40°C



TEMPERATURE RESISTANCE  
from -40°C to +90°C

Name	Size	Package
CoroMIN® PB	300mm x 5r.m.	1 roll



anthracite



brick red



chestnut



light brown



black

Additional colours available on request.

A self-adhesive bituminous roofing tape covered with an aluminium layer is a barrier to atmospheric waterfalls. It is resistant to influence of weather conditions, UV-rays and ageing processes.

### Application:

- tape suitable for all kinds of roofing works

### Advantages:

- effectively seals places exposed to water, wind and moisture influence
- it is characterised by extreme adhesiveness properties and adherence to places under working
- universal
- easy installation



TENSILE STRENGTH  
> 200 N



TAPE THICKNESS  
1,05 mm



OPERATING TEMPERATURE  
from +5°C to +40°C



TEMPERATURE RESISTANCE  
from -20°C to +80°C

Name	Size	Package
CoroBIT®	150mm x 10r.m.	2 pieces
CoroBIT®	300mm x 10r.m.	1 piece

8004

brick red

8017

light brown

9005

black

Colour natural (aluminium) available on request.

# CoroLINE®

Chimney slat is made of a special aluminum metal sheet covered with protective foil. It is used to secure the upper edges of chimney tapes. The product seals critical places around the chimney and is its aesthetic finishing. The slat is resistant to UV-rays and different weather conditions.

### Application:

- a slat used to chimney works

### Advantages:

- ensures appropriate sealing of critical places around the chimney
- aesthetic finish of roofing works
- wide scope of colours
- protects upper edges of chimney tapes



Name	Size	Package
CoroLINE®	80mm x 2r.m.	20 pieces



anthracite



brick red



chestnut



light brown



black

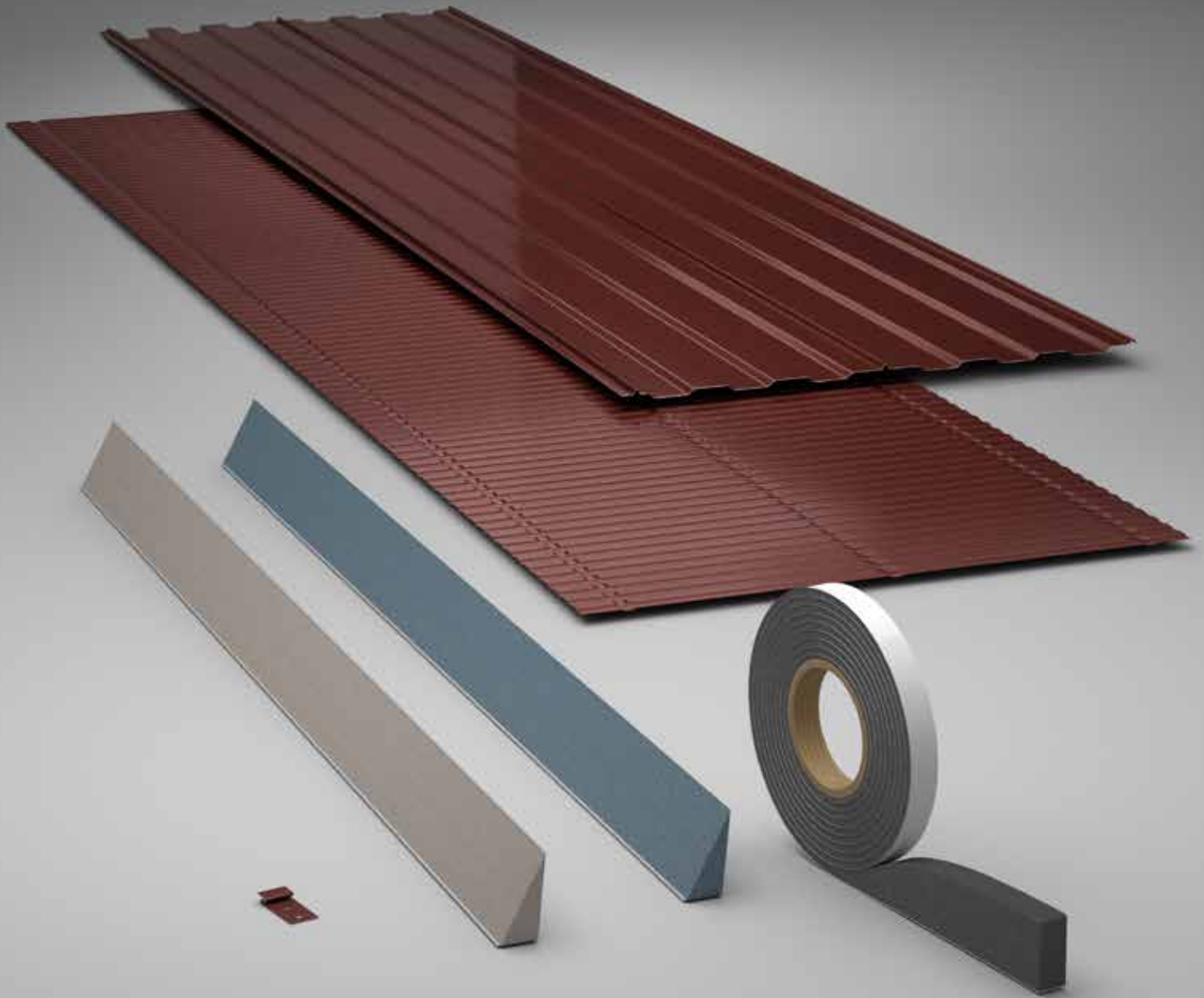
Additional colours available on request.

**„THE WILL  
TO WIN  
IS IMPORTANT,  
BUT THE WILL  
TO PREPARE  
IS VITAL.”**

**- Joe Paterno -**



# SYSTEMS OF ROOF BASKET



A self-adhesive tape made of elastic polyurethane foam impregnated with modified acrylic, which increases the resistance and durability of the product. It has the ability of 5-fold expansion in relation to initial thickness, which makes the sealing of any roof connections very effective. The tape is chemically neutral, resistant to UV-rays and weather conditions.

### Application:

- self-adhesive tape used for sealing slants, roof valleys and roof ridges
- it can be used with concrete, brick, PVC, steel and wood

### Advantages:

- perfect for joints which must be resistant to water and wind influence
- adjusted to rough surfaces, absorbs joints' move
- has the ability of 5-fold expansion in relation to initial thickness



INITIAL THICKNESS  
8 -10 mm



THICKNESS AFTER  
UNCOMPRESSING  
>36 / >45 mm



LENGTH  
3,3 / 4,0 m



WIDTH  
20 mm

Name	Size	Package
CoroPRESS®	20mm x 8mm x 4r.m.	12 pieces
CoroPRESS®	20mm x 10mm x 3,3r.m.	12 pieces



grey

# CoroKOSZ® P

The aluminium roof valley with transverse pressing, used as the finishing of the roof valley, which is the critical point of a roof system. The pressing increases metal sheet's stability so that there is no need to have the full-boarding under the roof valley. In the offer, there is also a CoroKOSZ K buckle available which supports installation.

### Application:

- a profiled aluminium metal sheet used as the finishing of a roof valley

### Advantages:

- the texture makes bending and cutting the metal sheet easier
- protects against water leakage in critical places on the roof
- it is possible to install CoroKOSZ on partly-boarded roofs



Name	Size	Package
CoroKOSZ® P	500mm x 2000mm	10 pieces



anthracite



brick red



chestnut



light brown



black

Additional colours available on request.

The aluminium roof valley with longitudinal pressing, used as the finishing of the roof valley, which is the critical point of a roof system. The pressing increases metal sheet's stability so that there is no need to have the full-boarding under the roof valley. In the offer, there is also a CoroKOSZ K buckle available which supports installation.

**Application:**

- a profiled aluminium metal sheet used as the finishing of a roof valley

**Advantages:**

- the texture makes bending and cutting the metal sheet easier
- protects against water leakage in critical places on the roof
- it is possible to install CoroKOSZ on partly-boarded roofs



Name	Size	Package
CoroKOSZ® W	500mm x 2000mm	20 pieces



chestnut



anthracite



brick red



light brown



black

Additional colours available on request.

# CoroCLIN®

The self-adhesive gasket made of polyurethane foam. Special vents enable transferring the moisture cumulated under the coverage outside. It is characterised with low water-absorbtion as well as resistance to UV-rays and ageing processes.

### Application:

- the sealing under ceramic roof coverage, simple and slope ridges as well as roof valleys

### Advantages:

- effectively seals places exposed to water and moisture penetration
- it has the positive influence on the roof ventilation process
- it is equipped with the adhesive stripe comfortable during installation



HEIGHT  
27 mm

LENGTH  
1000 mm

WIDTH  
60 mm

Name	Size	Package
CoroCLIN®	27mm x 60mm x 1r.m.	100 pieces



anthracite



brick red



light brown

Additional colours available on request.



A self-adhesive seal wedge made of durable, polyurethane foam impregnated with acrylic polymers, which increases its strength even in a very unfavourable weather conditions. The structure of the foam is characterized with low water absorbtion. It is resitant to UV-rays and ageing processes.

**Application:**

- universal wedge-shaped gasket made of soft polyurethane used under ceramic coverings, ridges, and roof valleys

**Advantages:**

- seals places exposed to water and moisture influence
- has the positive effect on the roof ventilation process
- it is equipped with the adhesive stripe comfortable during installation
- thanks to impregnation it is more resistant and durable



↑ WYSOKOŚĆ  
27 mm

↕ LENGTH  
1000 mm

↔ WIDTH  
60 mm

Name	Size	Package
CoroCLIN® PLUS	27mm x 60mm x 1r.m.	70 pieces



\* Available on request.

# CoroKOSZ® K

Aluminium clamp of CoroKOSZ P simplifying the fixing of roof valley. Using the clamp allows the installation of the roof valley without the use of nails or screws, damaging the surface of the roof valley.

**Application:**

- fixing of the roof valley

**Advantages:**

- provides installation's speed and its stability
- application of a clamp allows for roof valley without exposing it to damage the nail



Name	Package
CoroKOSZ® K	50 pieces



anthracite



brick red



chestnut



light brown



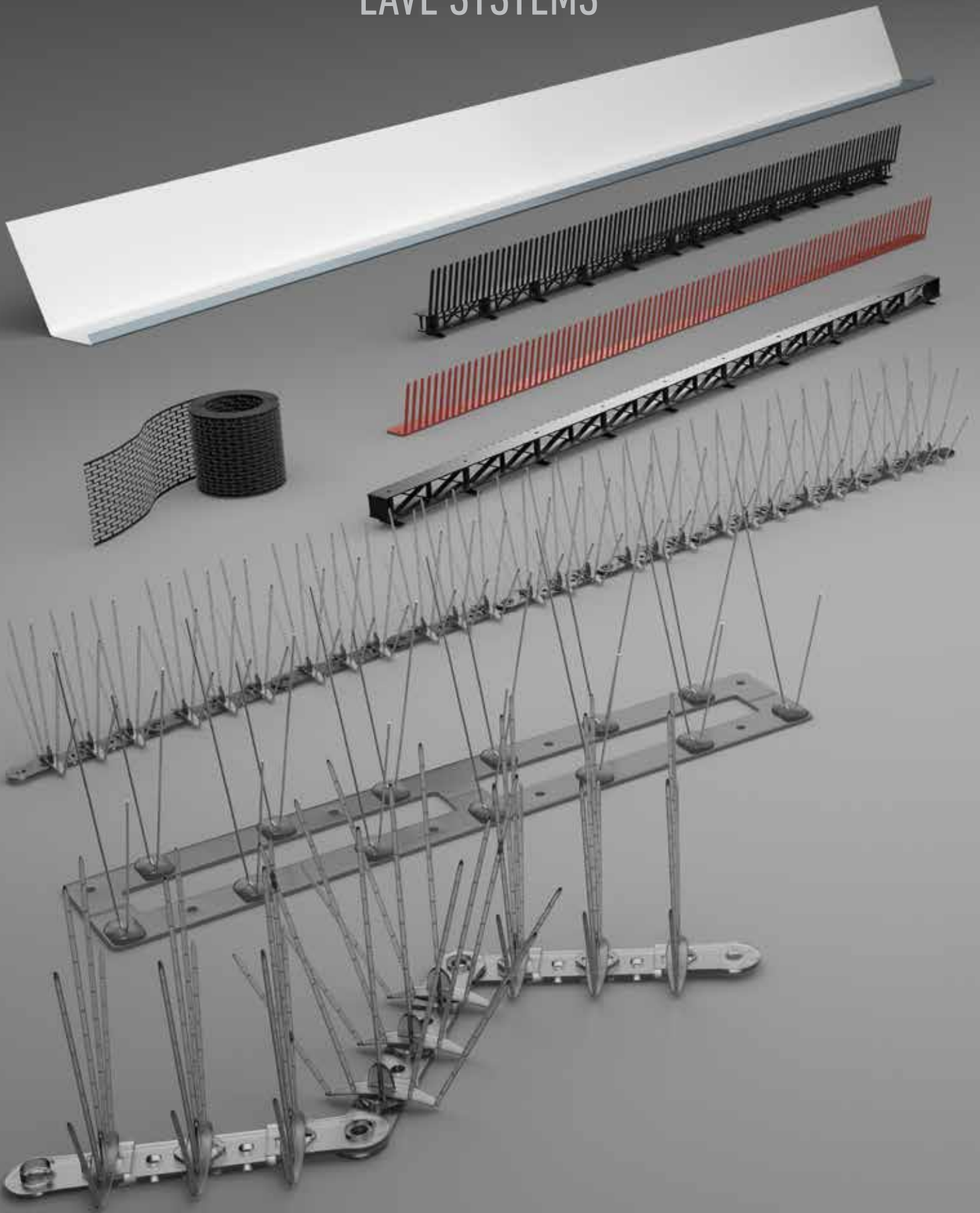
black

Additional colours available on request.

**„SUCCESS  
SEEMS TO BE  
LARGELY A MATTER  
OF  
HANGING  
ON AFTER  
OTHERS  
HAVE LET GO.”**

**- William Feather -**

# EAVE SYSTEMS





The eaves closing comb is made of flexible PVC, which prevents comb's elements against breaking under the pressure of tiles. It protects eaves area and underside roof space from birds, rodents, insects access as well as blown-in leaves and twigs. The comb provides great air-circulation of a roof space protecting thermal insulation at the same time. It is resistant to influence of outside factors- it does not become deformed or discoloured.

**Application:**

- eaves closing comb protecting the eaves area and underside roof space

**Advantages:**

- protects eaves' area and thermal-insulation against access of birds, rodents as well as blown-in leaves and twigs
- provides great air-circulation of the roof space
- resistant to breaking
- resistant to different weather conditions and UV-rays



Name	Size	Package
CoroKAP®	55 mm x 1r.m.	300 pieces



brick red



light brown



black



# CoroKAP® V

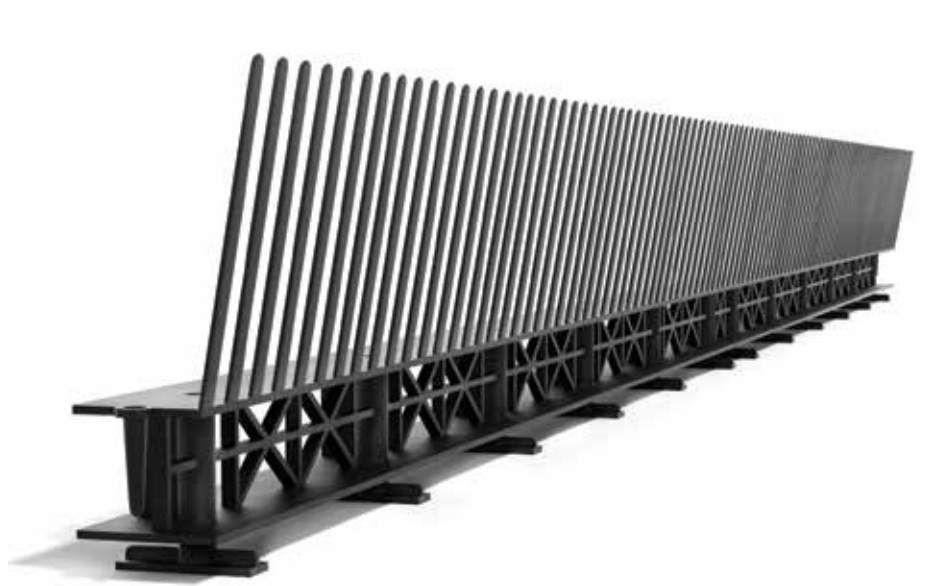
The eaves closing comb is made of flexible PVC, which prevents comb's elements against breaking under the pressure of tiles. It protects eaves area and underside roof space from birds, rodents, insects access as well as blown-in leaves and twigs. Thanks to a built-in ventilating element the air-circulation of a roof space is improved. Special footdistances allow the easy installation of gutters' hooks.

**Application:**

- eaves closing comb protecting the eaves area and underside roof space

**Advantages:**

- increased ventilation space
- protects eaves' area and thermal-insulation againsts the access of birds, rodents and insects
- prevents from blowing in leaves and twigs
- resistant to mechanical damages
- resistant to different weather conditions and UV-rays



Name	Size	Package
CoroKAP® V	85 mm x 1r.m.	50 pieces



brick red



light brown



black

A vent element made of high quality PVC. It does not deform under the pressure of a roof coverage. It protects the eaves area against contamination intrusion. It is also resistant to different weather conditions and UV-rays.

**Application:**

- eaves venting element, protecting the eaves area and underside roof space

**Advantages:**

- ventilation of roof coverage from plain tiles e.x. Tegalit
- protection against insects and any contamination



Name	Size	Package
CoroKAP® EV	32 mm x 1r.m.	100 pieces



brick red



light brown



black

# CoroCRAT®

The eaves mesh-faced closer is made of high quality PVC. It provides appropriate air circulation below the roof finish, at the same time protecting the eaves area and underside roof space against access of birds, rodents, insects as well as blown-in leaves and twigs. It also protects thermal insulation from damages.

### Application:

- an eaves mesh-faced closer to roof eaves' area protection

### Advantages:

- ventilates roof coverage from made of plain tiles
- protection against insects and any contamination
- resistant to UV-rays and ageing processes
- exists in several dimensions



LENGTH  
5 r.m.

WIDTH  
80 / 100 mm

Name	Size	Package
CoroCRAT®	80mm x 5r.m.	20 pieces
CoroCRAT®	100mm x 5r.m.	20 pieces



brick red



light brown



black

The over gutter flashing, made of aluminium. It is used to direct water flow from the initial roof covering, as well as condensation from foils to the gutter system. It is available in several colours, what enables fitting the product to the colour of roof coverage and roofing works.

**Application:**

- an over gutter flashing protecting front eaves' part

**Advantages:**

- protects against blowing-in rain and snow under roof coverage space
- prevents underside roof area and eaves against damping as well as creating damp patches on elevation
- resistant to UV-radiation and aging



Name	Size	Package
CoroRAN®	70mm x 2r.m.	20 pieces



anthracite



brick red



chestnut



light brown



black

\* Available on request.

# CoroBIRD®

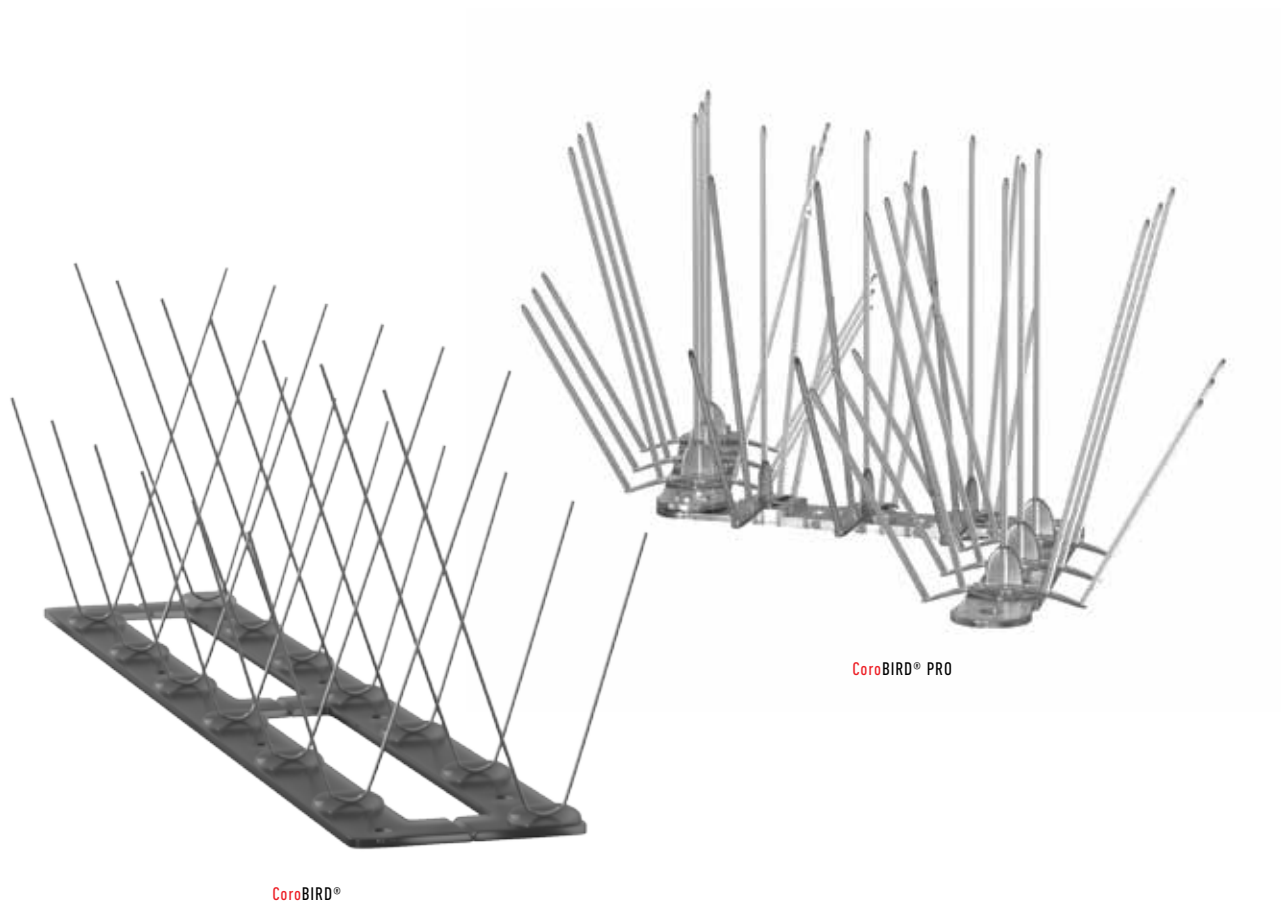
A protective module is made of stainless steel needles installed to a polycarbonate base. It is used as a barrier preventing birds from sitting and nesting in places where Corobird is fixed. Modules can be combined in any length protective ranks.

**Application:**

- protection against birds' presence on roofs, sills and balconies

**Advantages:**

- protects chosen areas
- eliminates contamination on cornices, sills and balconies made by birds



Name	Size	Package
CoroBIRD®	120mm x 330mm x 110mm	100 pieces
CoroBIRD® PRO	120mm x 330mm x 130mm	100 pieces







**„TARGET OVER YOUR GOAL,  
TO ACHIEVE YOUR GOAL.”**

**- Karol Bunsch -**

# ASSEMBLY SYSTEMS



Buckles are made of high grade aluminium coated with poliester paint. They provide durable and solid fixing. In the offer there are the most popular types and colours available.

**Application:**

- universal Rooftile attachment bracket

**Advantages:**

- an easy and stable ridge tile fixing
- protects againts unfavourable wind influence



Name	Package
CoroKAL® UNI	1000 pieces

7016  
anthracite

8004  
brick red

8019  
light brown

9005  
black

Available on request.

# CoroSPIN®

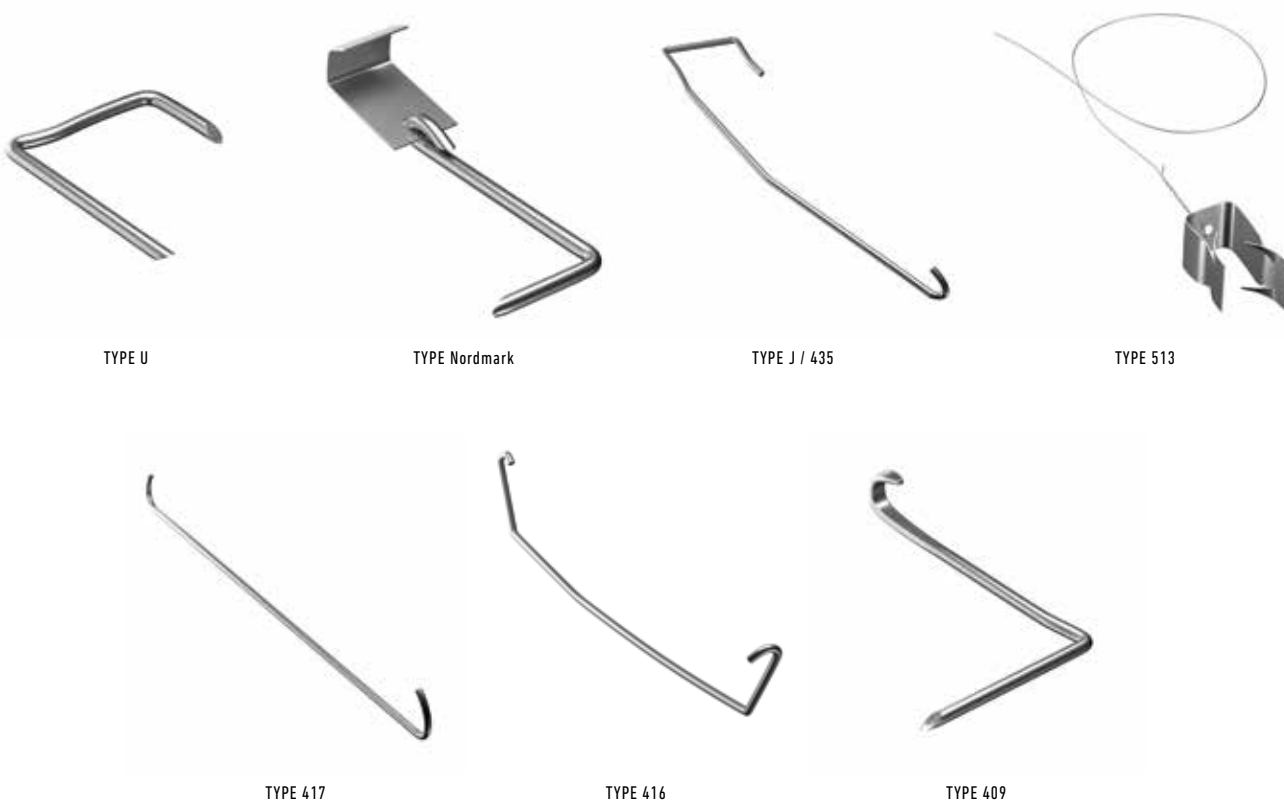
Tile fasteners are made of the wire coated with iron and zinc-aluminium. They are resistant to corrosion and atmospheric rainfalls influence. Each type of the tile fastener is available in different dimensions.

### Application:

- tile fasteners

### Advantages:

- an easy and stable tiles installation
- protects against unfavourable wind influence
- wide scope of tile fasteners, adjusted to different types of tiles



Name	Package
CoroSPIN® type 513	25 pieces
CoroSPIN® type 417	100 pieces
CoroSPIN® type Nordmark 2-2	100 pieces
CoroSPIN® type 416	100 pieces
CoroSPIN® type J/435	100 pieces
CoroSPIN® type U	100 pieces
CoroSPIN® type 409	200 pieces

galvanized/\*stainless steel

A black and white photograph of a person walking a tightrope between two rocky cliffs. The person is silhouetted against a cloudy sky. The text is overlaid on the left side of the image.

**„THE ONLY WAY  
FOR DEVELOPMENT  
IS TO RAISE THE BAR  
CONTINUOUSLY,  
THE ONLY  
MEASURE OF SUCCESS  
IS THE EFFORT WE PUT  
TO ACHIEVE IT.”**

**- Bruce Lee -**





Toe board made of galvanized steel sheet. Non-slip perforation and profiled outer edges increase safety of using. Element for moving across the roof, parallel to the ridge.

### Application:

- a toe board for safely walk on the roof

### Advantages:

- non-slip
- easy to install (Corolav system)
- protected against corrosion caused by precipitation



Name	Size	Package
CoroLAV®	400mm x 250mm	2 pieces
CoroLAV®	600mm x 250mm	2 pieces
CoroLAV®	800mm x 250mm	2 pieces
CoroLAV®	1000mm x 250mm	2 pieces
CoroLAV®	1200mm x 250mm	2 pieces
CoroLAV®	1500mm x 250mm	2 pieces
CoroLAV®	2000mm x 250mm	2 pieces
CoroLAV®	2500mm x 250mm	2 pieces
CoroLAV®	3000mm x 250mm	2 pieces



chestnut



anthracite



brick red



light brown



black

Additional colours available on request.

# CoroLAV® L

Specialist coupler made of galvanized steel sheet. Element intended to connect toe boards in serial.

**Application:**

- coupler of the toe board

**Advantages:**

- easy to install (Corolav system)
- protected against corrosion caused by precipitation



Name	Size	Package
CoroLAV® L	20mm x 100mm x 180mm	2 pieces



Additional colours available on request.

Brackets for the toe boards made of galvanized steel flat bar. The model of bracket is adapted to the type of the roof covering. Each kit is equipped with a set of stainless steel screws, washers and nuts.

**Application:**

- a toe board for safely walk on the roof

**Advantages:**

- non-slip
- easy to install (Corolav system)
- protected against corrosion caused by precipitation



CoroLAV® W Ceramic Tile „D” Type



CoroLAV® W Ceramic Tile



CoroLAV® W Plain Tile

Name	Package
CoroLAV® W Ceramic Tile „D” Type	5 pieces
CoroLAV® W Ceramic Tile	5 pieces
CoroLAV® W Plain Tile	5 pieces



chestnut



anthracite



brick red



light brown



black

# CoroLAV® W

Brackets for the toe boards made of galvanized steel flat bar. The model of bracket is adapted to the type of the roof covering. Each kit is equipped with a set of stainless steel screws, washers and nuts.

### Application:

- toe board or toe hold bracket

### Advantages:

- easy to install (Corolav system)
- a wide scope of brackets adapted to different types of tiles
- protected against corrosion caused by precipitation



CoroLAV® W Metal Tile



CoroLAV® W Flat Cover „U” Type\*



CoroLAV® W Standing Seam Roofing\*

Name	Package
CoroLAV® W Metal Tile	5 pieces
CoroLAV® W Flat Cover „U” Type*	5 pieces
CoroLAV® W Standing Seam Roofing*	5 pieces

3009  
chestnut

7016  
anthracite

8004  
brick red

8017  
light brown

9005  
black

Additional colours and sizes available on request.

Toe board's bracket made of galvanized angle steel sheet. It is an element attaching toe boards to the side of the chimney. Equipped with a set of 2 stainless steel screws M8 x 50.

**Application:**

- fixing element for toe board attached to stone's constructions

**Advantages:**

- easy to install (Corolav system)
- protected against corrosion caused by precipitation



Name	Package
CoroLAV® K	5 pieces

3009  
chestnut

7016  
anthracite

8004  
brick red

8017  
light brown

9005  
black

Additional colours available on request.



# CoroLAV® M

Fixing element for toe board made of galvanized flat bar steel. Fixes the toe board to bracket or adjusted tile. It allows regulation depending on the angle of the roof surface. Set includes 2 stainless steel screws M8 x 50 with washers and nuts.

**Application:**

- fixing element for toe board attached to the bracket or adjusted tile

**Advantages:**

- easy to install (Corolav system)
- protected against corrosion caused by precipitation



Name	Package
CoroLAV® M	5 pieces



chestnut



anthracite



brick red



light brown



black

Additional colours available on request.

Toe hold chimney sweep of galvanized flat bar steel. It consists of the mounting part, the step and handle. Improves walking through the vertical surface of the roof. Non-slip perforation and profiled outer edges increase safety of using.

**Application:**

- a toe hold facilitating access the roof

**Advantages:**

- profiled
- easy to install (Corolav system)
- protected against corrosion caused by precipitation



Name	Package
CoroSTEP®	5 pieces

3009  
chestnut

7016  
anthracite

8004  
brick red

8017  
light brown

9005  
black

Additional colours available on request.

# Corotop® SET

The communication system of roof consists of toe board, 2 fixing elements and 2 toe board brackets and 2 sets of stainless steel screws. Type of system adjusted to the type of tile.

### Application:

- a set of roof safety for safely walking on the roof surface

### Advantages:

- comprehensive solution
- easy system installation
- protected against corrosion caused by precipitation
- a wide scope of systems adjusted to different types of tiles



Name	Package
Corotop® SET - Bench Support Plain Tile	1 set
Corotop® SET -Bench Support Ceramic Tile „D“ Type	1 set



chestnut



anthracite



brick red



light brown



black

Additional colours and sizes available on request.



**„QUALITY  
IS NOT A COINCIDENCE  
- IT MUST BE PLANNED.“**

**- Joseph Juran -**

# SNOW PROTECTION SYSTEMS





Snow barrier made from riveted galvanized steel. Used to secure the gutter system before breaking away as a result of sliding down snow from the roof surface. It can be used on roofs covered by metal sheet tiles or traditional ones.

### Application:

- protecting the front of the eaves and the space above the external entrances
- in case of using several snow guards in row elements should be connected together by CoroSNOW® L

### Advantages:

- ensures safety and prevents the uncontrolled snowfalls
- prevents damages to the gutters
- protected against corrosion caused by precipitation



Name	Size	Package
CoroSNOW® *	200mm x 1200mm	5 pieces
CoroSNOW®	200mm x 2000mm	5 pieces
CoroSNOW®	200mm x 3000mm	5 pieces
CoroSNOW® L	25mm x 25mm x 60mm	6 pieces



chestnut



anthracite



brick red



light brown



black

Additional colours and sizes available on request.

# CoroSNOW® W

The snowguard hold is made of steel plate and stands for the installation element for snowguard protection. Each hold is adjusted to certain type of a tile.

**Application:**

- a snow guard hold

**Advantages:**

- transfers pressure of accumulated snow
- wide scope of snow barrier holds, adjusted to different types of tiles
- easy and convenient installation



Corosnow® W Metal Tile



Corosnow® W Ceramic Tile



Corosnow® W Plain Tile

Name	Package
CoroSNOW® W Metal Tile	5 pieces
CoroSNOW® W Ceramic Tile	5 pieces
CoroSNOW® W Plain Tile	5 pieces

3009  
chestnut

7021  
anthracite

8004  
brick red

8017  
light brown

9005  
black

Additional colours available on request.

The snowguard hold is made of steel plate and stands for the installation element for snowguard protection. Each hold is adjusted to certain type of a tile.

**Application:**

- a snow guard hold

**Advantages:**

- transfers pressure of accumulated snow
- wide scope of snow barrier holds, adjusted to different types of tiles
- easy and convenient installation



Corosnow® W Flat Cover „U“ Type\*



Corosnow® W Standing Seam Roofing\*

Name	Package
CoroSNOW® W Flat Cover „U“ Type*	5 pieces
CoroSNOW® W Standing Seam Roofing*	5 pieces



chestnut



anthracite



brick red



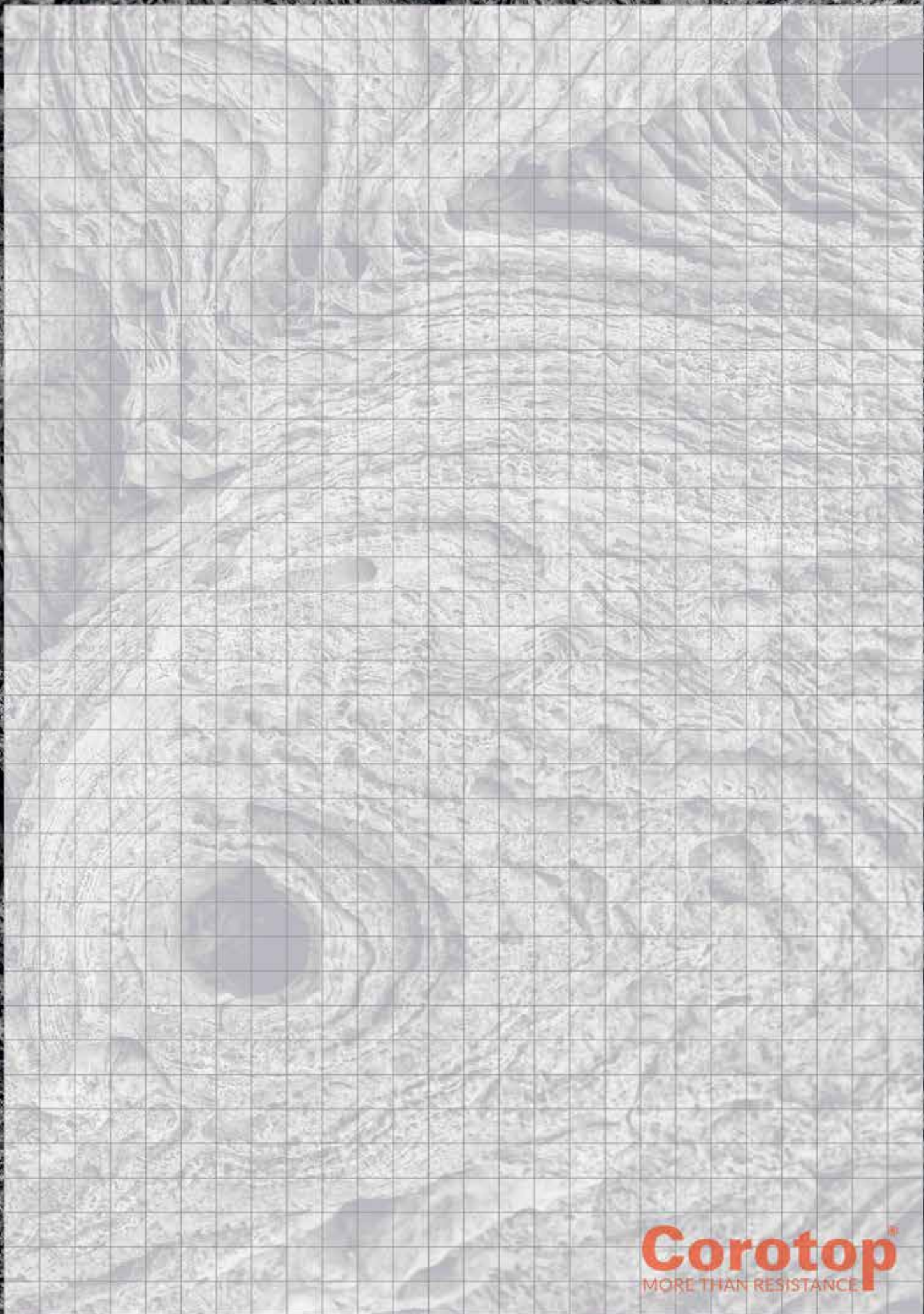
light brown



black

Additional colours available on request.

**Notebook**



**Corotop<sup>™</sup>**  
MORE THAN RESISTANCE

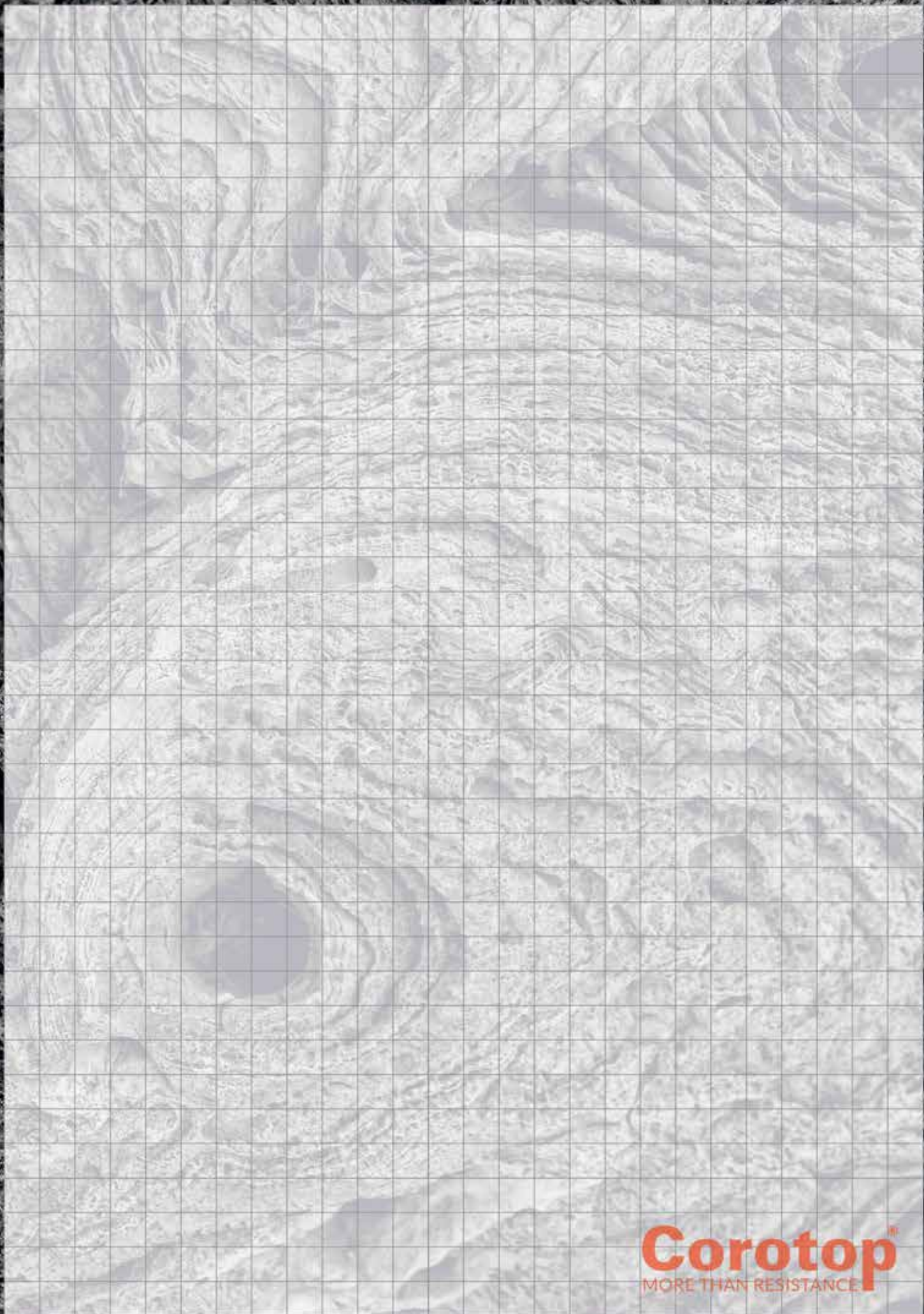


# Notebook

**Corotop**<sup>®</sup>  
MORE THAN RESISTANCE



**Notebook**



**Corotop<sup>™</sup>**  
MORE THAN RESISTANCE



# Notebook

**Corotop**<sup>®</sup>  
MORE THAN RESISTANCE



[WWW.COROTOP.COM.PL](http://WWW.COROTOP.COM.PL)